

## ASCOT 18

TRADITIONAL FACADE



Images are for illustrative purposes only.



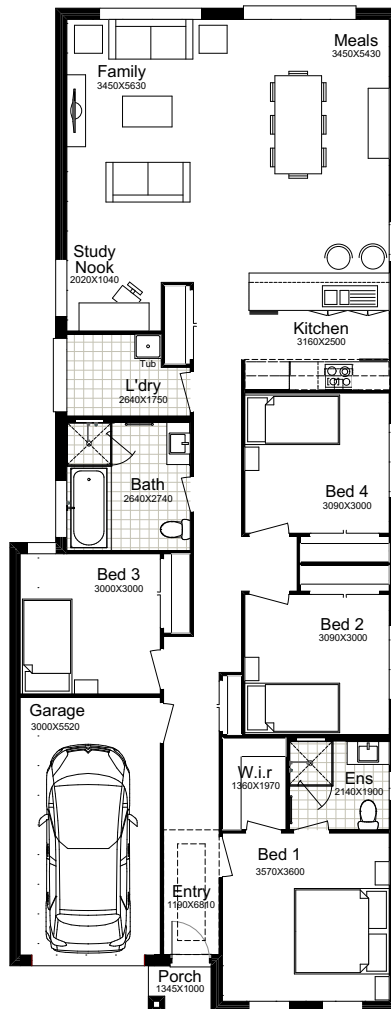
4  2  2  1  1 

## Why Choose Better Built Homes?

At Better Built Homes we listen carefully to the lifestyle aspirations of our customers. We present you with the end price right up front, so there are no nasty cost surprises.

# ASCOT 18

This plan is based on the Traditional Façade.



## TRADITIONAL

Ground Floor	145.70m <sup>2</sup>
Garage	18.51m <sup>2</sup>
Porch	1.35m <sup>2</sup>
<b>Total Area</b>	<b>165.56m<sup>2</sup></b>
House Width	8.36m
House Length	21.50m



## MODERN

<b>Total Area</b>	<b>170.95m<sup>2</sup></b>
House Width	8.36m
House Length	22.50m

## MODERN

<b>Total Area</b>	<b>165.56m<sup>2</sup></b>
House Width	8.36m
House Length	21.50m

Family living at its best. A modern design for a snappy lifestyle. So compact and liveable, oozing charm all the way. With four bedrooms and a study and lots more, this is an intelligent design. It will be love at first sight!

Façade Images shown on our brochures may feature alternative upgrades. Upgraded finishes are not included in the standard range or house design and should be used as a guide only. Plan dimensions, sizes & square meters will vary dependent on the chosen house façade & design. Better Built Homes reserves the right to revise plans, specifications & prices without notice or obligation. All plans are Copyright of Better Built Homes. Please consult your sales consultant for a full list of standard inclusions & façade options.