

BELLE VIEW 26

MODERN FACADE



Images are for illustrative purposes only.



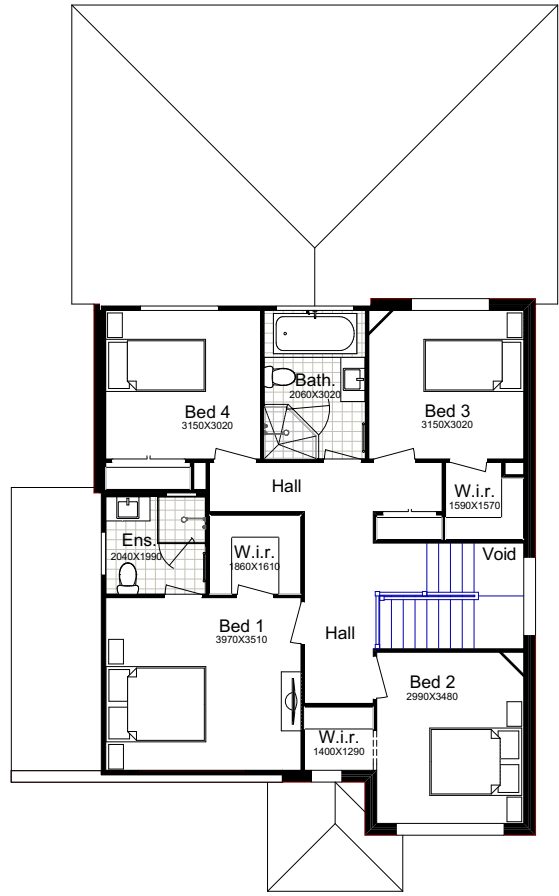
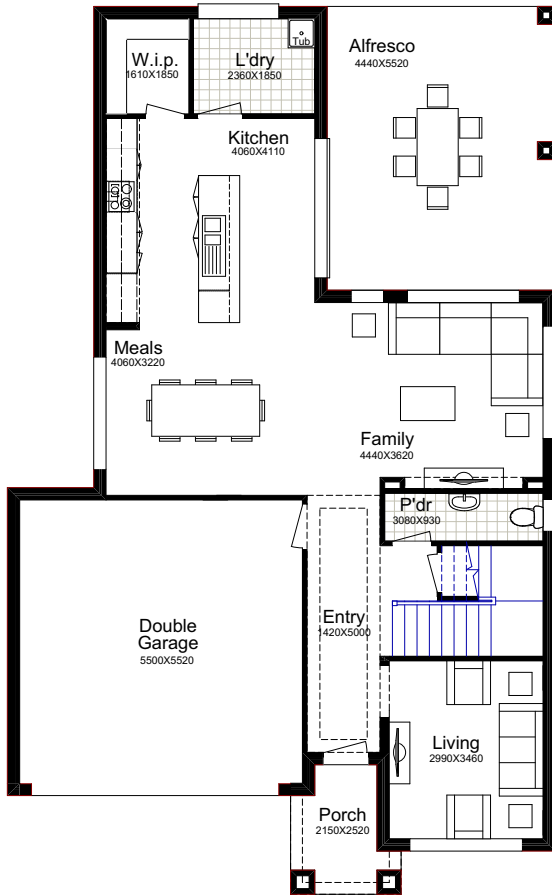
4  2.5  3  2 

Why Choose Better Built Homes?

At Better Built Homes we listen carefully to the lifestyle aspirations of our customers. We present you with the end price right up front, so there are no nasty cost surprises.

BELLE VIEW 26

This plan is based on the Traditional Façade.



TRADITIONAL

Ground Floor	92.87m ²
First Floor	88.91m ²
Garage	33.55m ²
Alfresco	24.51m ²
Porch	4.35m ²
Total Area	244.19m²
House Width	10.66m
House Length	17.27m



URBAN

Total Area	243.48m²
House Width	10.66m
House Length	16.91m

MODERN

Total Area	246.90m²
House Width	10.90m
House Length	17.39m

A snappy, two storey home the Belle View will delight with its innovative creation of space for families to enjoy a great lifestyle. Welcome your guests to the living room near the entrance where they can catch their breath after seeing the street stopping façade.

Façade Images shown on our brochures may feature alternative upgrades. Upgraded finishes are not included in the standard range or house design and should be used as a guide only. Plan dimensions, sizes & square meters will vary dependent on the chosen house façade & design. Better Built Homes reserves the right to revise plans, specifications & prices without notice or obligation. All plans are Copyright of Better Built Homes. Please consult your sales consultant for a full list of standard inclusions & façade options.