

BROOKLYN 24

URBAN FACADE



Images are for illustrative purposes only.



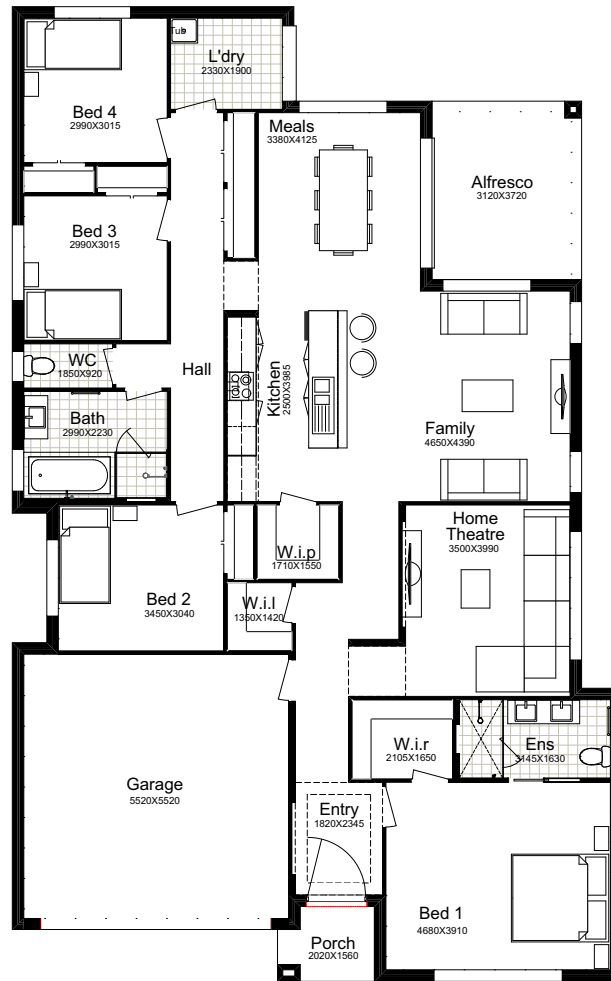
4  2  3  2 

Why Choose Better Built Homes?

At Better Built Homes we listen carefully to the lifestyle aspirations of our customers. We present you with the end price right up front, so there are no nasty cost surprises.

BROOKLYN 24

This plan is based on the Traditional Façade.



TRADITIONAL

Ground Floor	178.81m ²
Garage	33.35m ²
Alfresco	11.61m ²
Porch	2.95m ²
Total Area	226.72m²
House Width	12.71m
House Length	20.32m



URBAN

Total Area	229.39m²
House Width	12.71m
House Length	20.92m

MODERN

Total Area	230.52m²
House Width	12.71m
House Length	21.40m

A four bedroom entertainer where you can relax in the alfresco or take in a movie in the home theatre. The living areas flow easily from the open plan kitchen giving a great feeling of freedom. The bedroom accommodation is cleverly separated from the everyday rush and bustle.

Façade Images shown on our brochures may feature alternative upgrades. Upgraded finishes are not included in the standard range or house design and should be used as a guide only. Plan dimensions, sizes & square meters will vary dependent on the chosen house façade & design. Better Built Homes reserves the right to revise plans, specifications & prices without notice or obligation. All plans are Copyright of Better Built Homes. Please consult your sales consultant for a full list of standard inclusions & façade options.