

# DAKOTA 29

MODERN FACADE



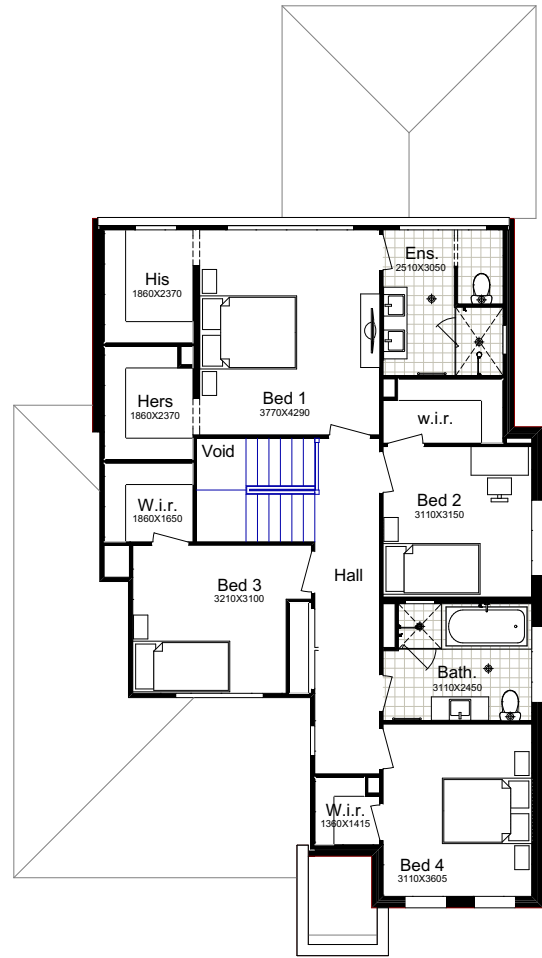
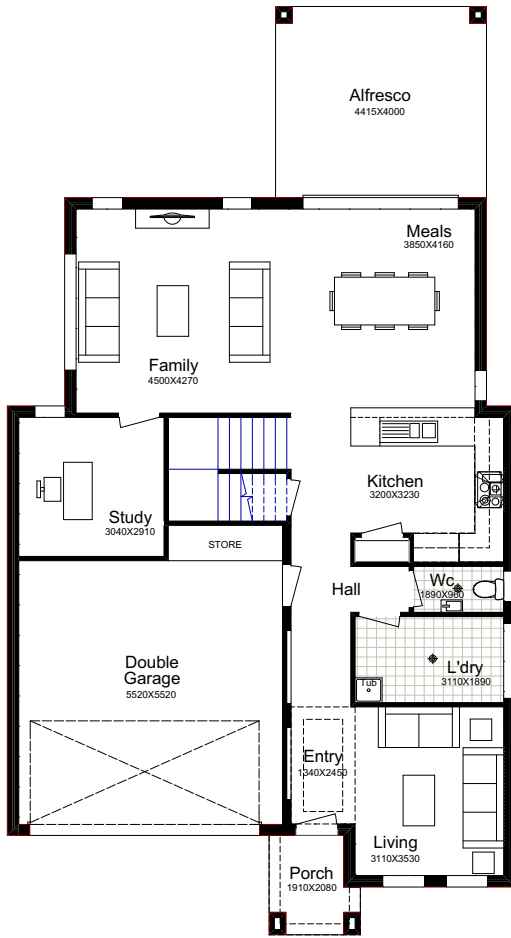
4  2.5  3  1  2 

## *Why Choose Better Built Homes?*

At Better Built Homes we listen carefully to the lifestyle aspirations of our customers. We present you with the end price right up front, so there are no nasty cost surprises.

# DAKOTA 29

This plan is based on the Traditional Façade.



## TRADITIONAL

Ground Floor	103.05m <sup>2</sup>
First Floor	107.34m <sup>2</sup>
Garage	34.89m <sup>2</sup>
Alfresco	17.66m <sup>2</sup>
Porch	3.59m <sup>2</sup>
<b>Total Area</b>	<b>266.53m<sup>2</sup></b>
House Width	10.63m
House Length	19.43m

## URBAN GALLERY

<b>Total Area</b>	<b>266.53m<sup>2</sup></b>
House Width	10.63m
House Length	19.43m

## MODERN

<b>Total Area</b>	<b>269.89m<sup>2</sup></b>
House Width	10.63m
House Length	19.67m

Vibrant & versatile the Dakota wins hearts & minds with its expansive accommodation options. The four bedrooms upstairs will seduce you with walk-in robes in all. The main is simply sensational with separate his and hers walk in robes and a classy ensuite.

Façade Images shown on our brochures may feature alternative upgrades. Upgraded finishes are not included in the standard range or house design and should be used as a guide only. Plan dimensions, sizes & square meters will vary dependent on the chosen house façade & design. Better Built Homes reserves the right to revise plans, specifications & prices without notice or obligation. All plans are Copyright of Better Built Homes. Please consult your sales consultant for a full list of standard inclusions & façade options.