

ADRIANA 31

MODERN FACADE



Images are for illustrative purposes only.



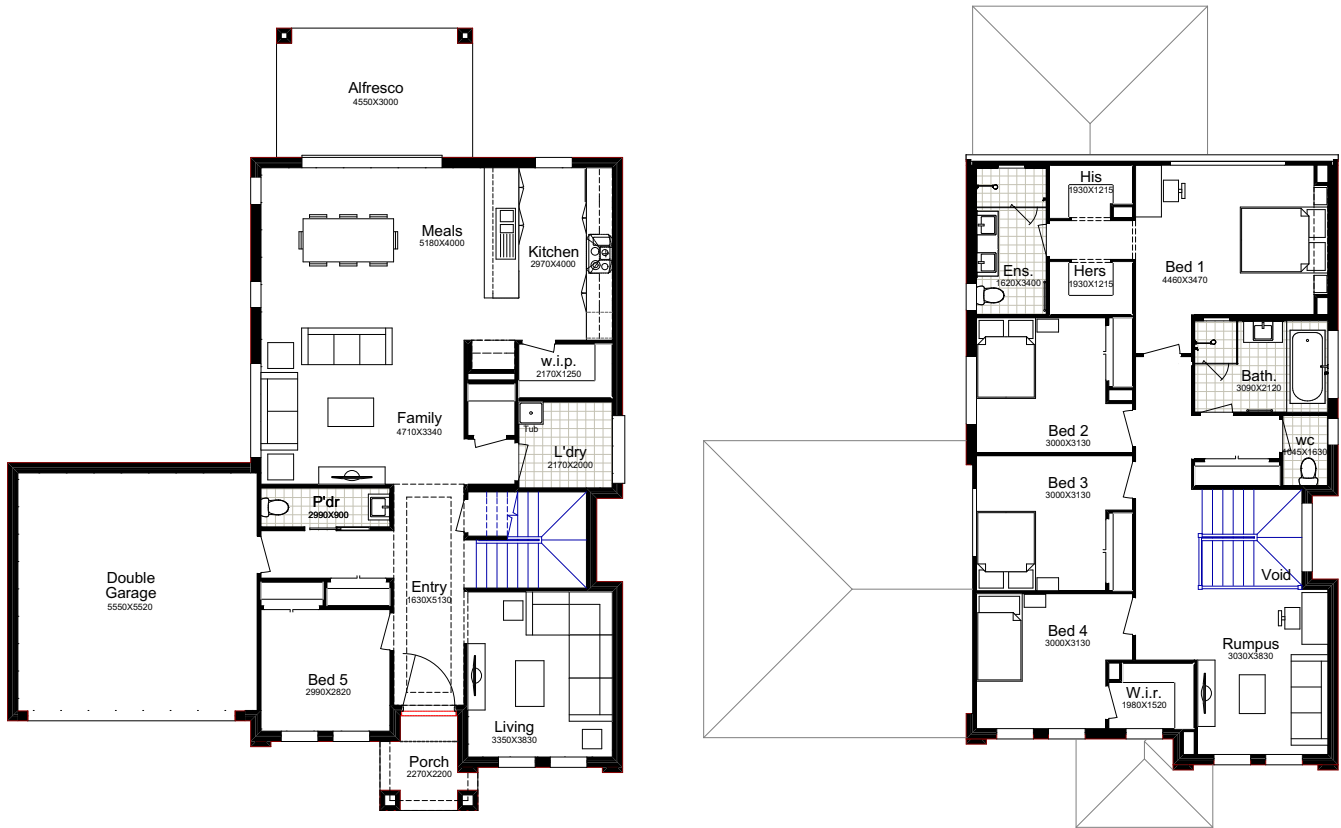
5  2.5  4  2 

Why Choose Better Built Homes?

At Better Built Homes we listen carefully to the lifestyle aspirations of our customers. We present you with the end price right up front, so there are no nasty cost surprises.

ADRIANA 31

This plan is based on the Traditional Façade.



TRADITIONAL



URBAN



TRADITIONAL

Ground Floor	116.56m ²
First Floor	115.13m ²
Garage	34.61m ²
Alfresco	13.65m ²
Porch	4.15m ²
Total Area	284.10m²
House Width	14.27m
House Length	18.15m

URBAN GALLERY

Total Area	293.34m²
House Width	14.27m
House Length	18.39m

MODERN

Total Area	285.11m²
House Width	14.29m
House Length	18.39m

It will be love at first sight with this impressive, five bedroom residence, designed to create a dream lifestyle. The open plan living areas will have you in awe as you view the spacious family and living rooms, cleverly coordinated with the gourmet kitchen for five star dining.

Façade Images shown on our brochures may feature alternative upgrades. Upgraded finishes are not included in the standard range or house design and should be used as a guide only. Plan dimensions, sizes & square meters will vary dependent on the chosen house façade & design. Better Built Homes reserves the right to revise plans, specifications & prices without notice or obligation. All plans are Copyright of Better Built Homes. Please consult your sales consultant for a full list of standard inclusions & façade options.