

HAMPTON 45

CLASSIC FACADE



Images are for illustrative purposes only.



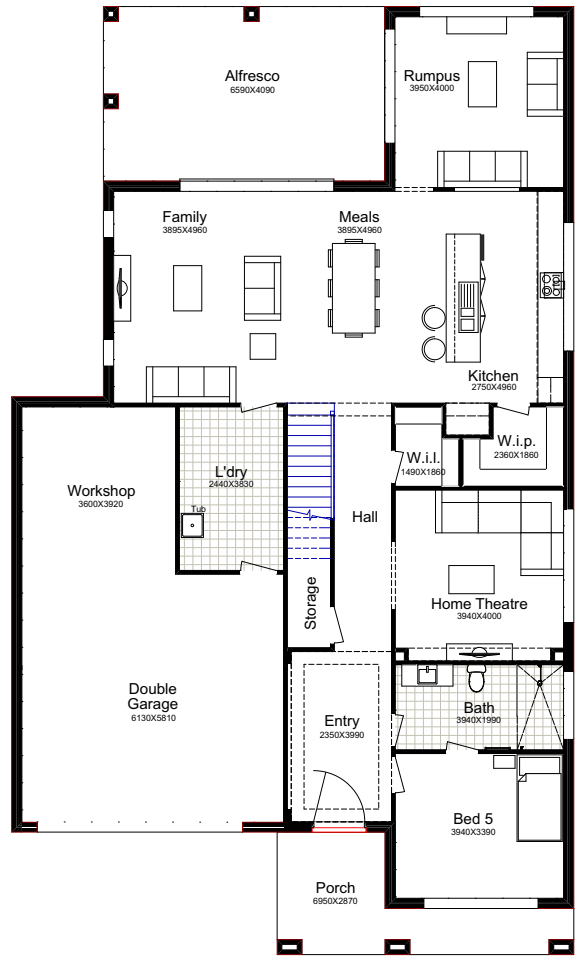
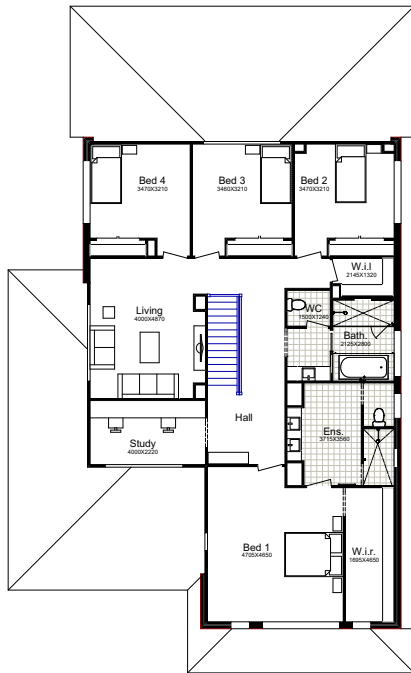
5  3  5  1  2 

Why Choose Better Built Homes?

At Better Built Homes we listen carefully to the lifestyle aspirations of our customers. We present you with the end price right up front, so there are no nasty cost surprises.

HAMPTON 45

This plan is based on the Traditional Façade.



TRADITIONAL



MODERN



URBAN GALLERY



TRADITIONAL

Ground Floor	1 49.95m ²
First Floor	161.82m ²
Garage	54.04m ²
Alfresco	26.95m ²
Porch	12.03m ²
Total Area	404.79m²
House Width	13.17m
House Length	22.21m

CLASSIC

Total Area	407.92m²
House Width	13.02m
House Length	22.51m

URBAN GALLERY

Total Area	408.71m²
House Width	13.17m
House Length	22.33m

MODERN

Total Area	403.35m²
House Width	13.17m
House Length	22.21m

One look at this stylish, contemporary, two storey home and you will be immediately whisked away to an imaginary tropical plantation where your family will live a lifestyle the envy of your neighbours. Family relaxation will come easy as you settle into the home theatre.

Façade Images shown on our brochures may feature alternative upgrades. Upgraded finishes are not included in the standard range or house design and should be used as a guide only. Plan dimensions, sizes & square meters will vary dependent on the chosen house façade & design. Better Built Homes reserves the right to revise plans, specifications & prices without notice or obligation. All plans are Copyright of Better Built Homes. Please consult your sales consultant for a full list of standard inclusions & façade options.