

JAMIESON 27

MODERN FACADE



Images are for illustrative purposes only.



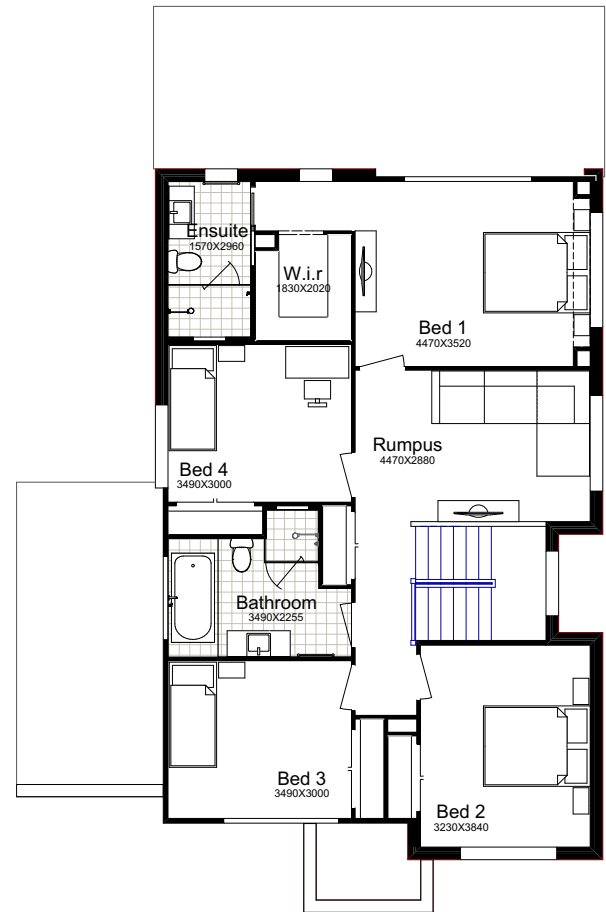
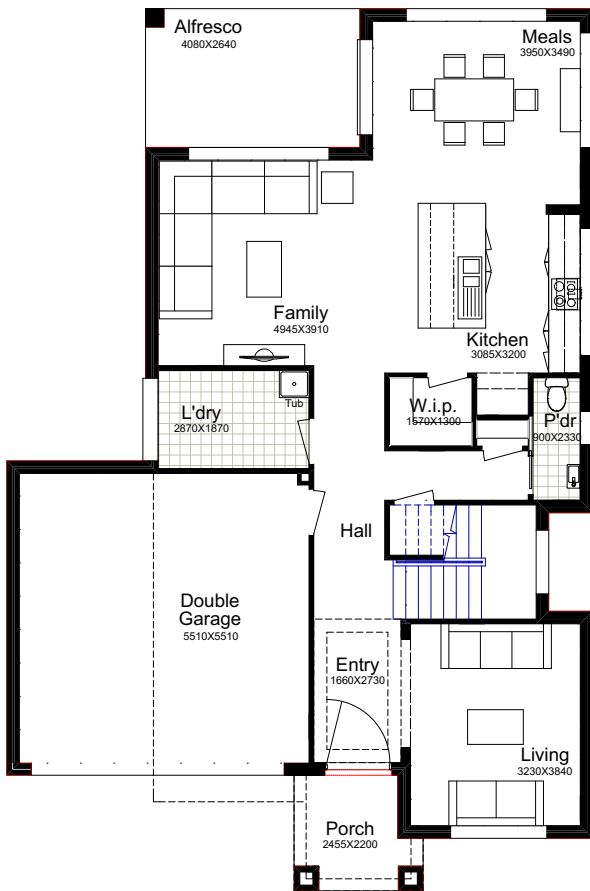
4  2.5  4  2 

Why Choose Better Built Homes?

At Better Built Homes we listen carefully to the lifestyle aspirations of our customers. We present you with the end price right up front, so there are no nasty cost surprises.

JAMIESON 27

This plan is based on the Traditional Façade.



TRADITIONAL

Ground Floor	98.86m ²
First Floor	105.64m ²
Garage	33.69m ²
Alfresco	10.77m ²
Porch	4.83m ²
Total Area	253.79m²
House Width	11.15m
House Length	16.78m



URBAN

Total Area	255.04m²
House Width	11.15m
House Length	16.78m

MODERN

Total Area	253.76m²
House Width	11.39m
House Length	16.78m

It will be love at first sight with this impressive, four bedroom residence, designed to create a dream lifestyle. The open plan living areas will have you in awe as you view the spacious family and open plan kitchen, cleverly coordinated with the gourmet kitchen for five star dining.

Façade Images shown on our brochures may feature alternative upgrades. Upgraded finishes are not included in the standard range or house design and should be used as a guide only. Plan dimensions, sizes & square meters will vary dependent on the chosen house façade & design. Better Built Homes reserves the right to revise plans, specifications & prices without notice or obligation. All plans are Copyright of Better Built Homes. Please consult your sales consultant for a full list of standard inclusions & façade options.