

MARSDEN 26

URBAN FACADE



Images are for illustrative purposes only.



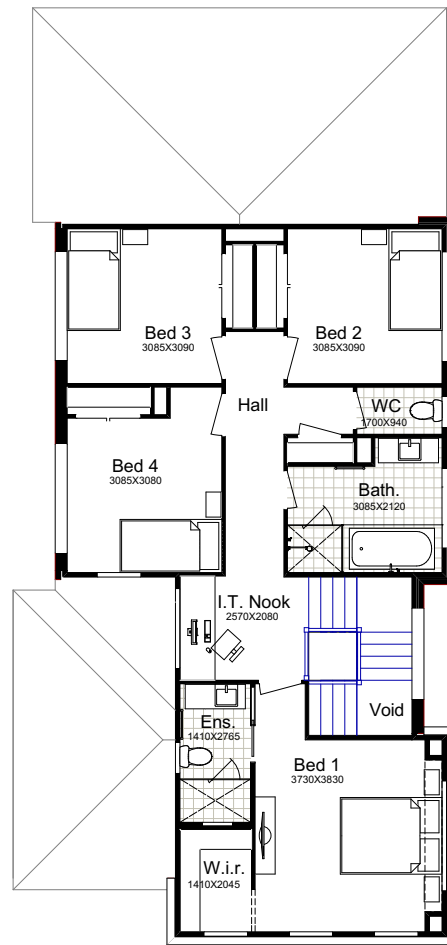
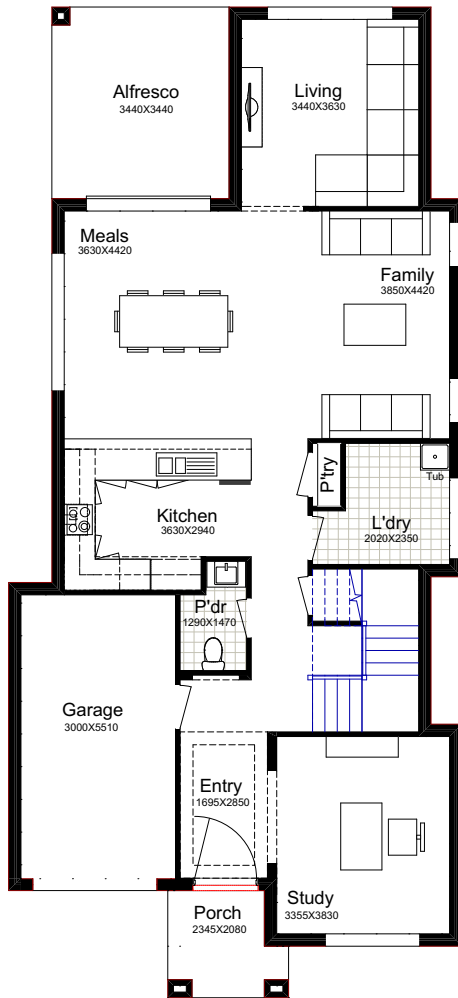
4  2.5  3  1  1 

Why Choose Better Built Homes?

At Better Built Homes we listen carefully to the lifestyle aspirations of our customers. We present you with the end price right up front, so there are no nasty cost surprises.

MARSDEN 26

This plan is based on the Traditional Façade.



TRADITIONAL

Ground Floor	110.13m ²
First Floor	93.60m ²
Garage	18.80m ²
Alfresco	12.80m ²
Porch	4.37m ²
Total Area	239.70m²
House Width	8.80m
House Length	19.23m



URBAN

Total Area	245.74m²
House Width	8.92m
House Length	19.35m

MODERN

Total Area	240.66m²
House Width	8.80m
House Length	19.33m

Designed to fit on a narrow block, this clever, modern design doesn't leave out any details. Immerse yourself in the spacious kitchen overlooking the living areas, leading to the alfresco. Upstairs the four bedrooms create surprising space, cleverly separated from the main with natural shafts of light illuminating the stairs.

Façade Images shown on our brochures may feature alternative upgrades. Upgraded finishes are not included in the standard range or house design and should be used as a guide only. Plan dimensions, sizes & square meters will vary dependent on the chosen house façade & design. Better Built Homes reserves the right to revise plans, specifications & prices without notice or obligation. All plans are Copyright of Better Built Homes. Please consult your sales consultant for a full list of standard inclusions & façade options.