

SARI 32

MODERN FACADE



Images are for illustrative purposes only.



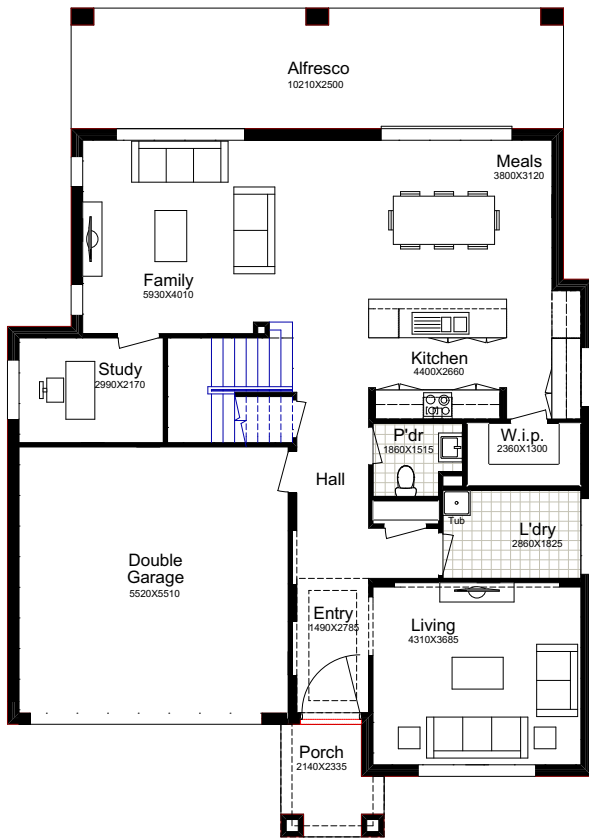
4  2.5  4  1  2 

Why Choose Better Built Homes?

At Better Built Homes we listen carefully to the lifestyle aspirations of our customers. We present you with the end price right up front, so there are no nasty cost surprises.

SARI 32

This plan is based on the Traditional Façade.



TRADITIONAL

Ground Floor	114.23m ²
First Floor	117.26m ²
Garage	33.47m ²
Alfresco	25.52m ²
Porch	4.49m ²
Total Area	294.97m²
House Width	12.13m
House Length	17.18m



URBAN GALLERY

Total Area	299.57m²
House Width	12.13m
House Length	16.53m

MODERN

Total Area	299.57m²
House Width	12.25m
House Length	17.17m

The Sari is an inspiring design from the time you walk to the front porch. And, your first impressions are carried through to the roomy interiors with great attention to detail. The majestic alfresco is both inviting and relaxing, spanning the whole width of the home, and will be ideal for memorable times.

Façade Images shown on our brochures may feature alternative upgrades. Upgraded finishes are not included in the standard range or house design and should be used as a guide only. Plan dimensions, sizes & square meters will vary dependent on the chosen house façade & design. Better Built Homes reserves the right to revise plans, specifications & prices without notice or obligation. All plans are Copyright of Better Built Homes. Please consult your sales consultant for a full list of standard inclusions & façade options.