

TRINITY 31

MODERN FACADE



Images are for illustrative purposes only.



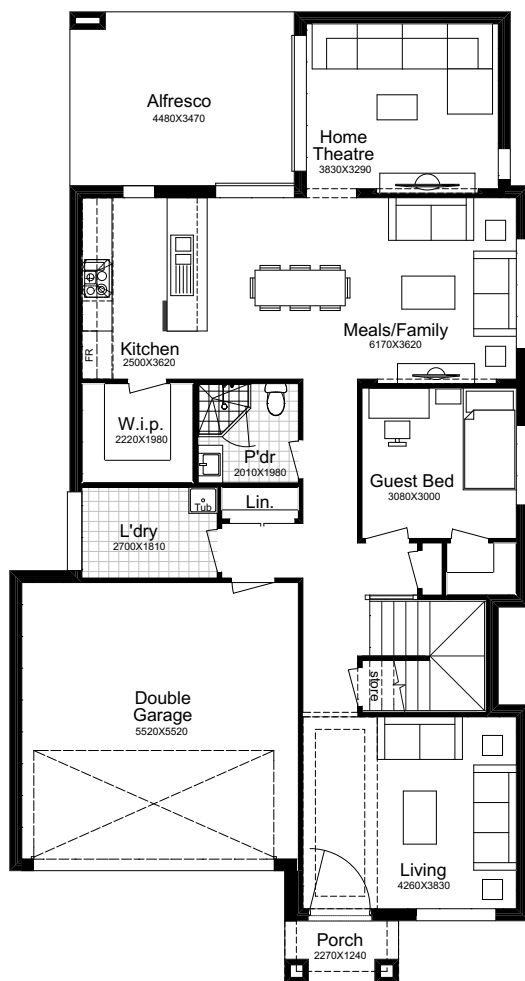
5  3  5  2 

Why Choose Better Built Homes?

At Better Built Homes we listen carefully to the lifestyle aspirations of our customers. We present you with the end price right up front, so there are no nasty cost surprises.

TRINITY 31

This plan is based on the Traditional Façade.



TRADITIONAL

Ground Floor	117.51m ²
First Floor	116.59m ²
Garage	33.41m ²
Alfresco	15.55m ²
Porch	2.81m ²
Total Area	285.87m²
House Width	10.35m
House Length	19.38m



URBAN GALLERY

Total Area	294.04m²
House Width	10.35m
House Length	19.34m

MODERN

Total Area	287.92m²
House Width	10.35m
House Length	19.14m

A five bedroom entertainer where you can relax in the alfresco or take in a movie in the home theatre. The living areas flow easily from the open plan kitchen giving a great feeling of freedom. The balance of the bedrooms allows freedom of movement and a rumpus for quiet moments. Choose the façade for your personality.

Façade Images shown on our brochures may feature alternative upgrades. Upgraded finishes are not included in the standard range or house design and should be used as a guide only. Plan dimensions, sizes & square meters will vary dependent on the chosen house façade & design. Better Built Homes reserves the right to revise plans, specifications & prices without notice or obligation. All plans are Copyright of Better Built Homes. Please consult your sales consultant for a full list of standard inclusions & façade options.