

WATERBROOK 28

MODERN FACADE



Images are for illustrative purposes only.



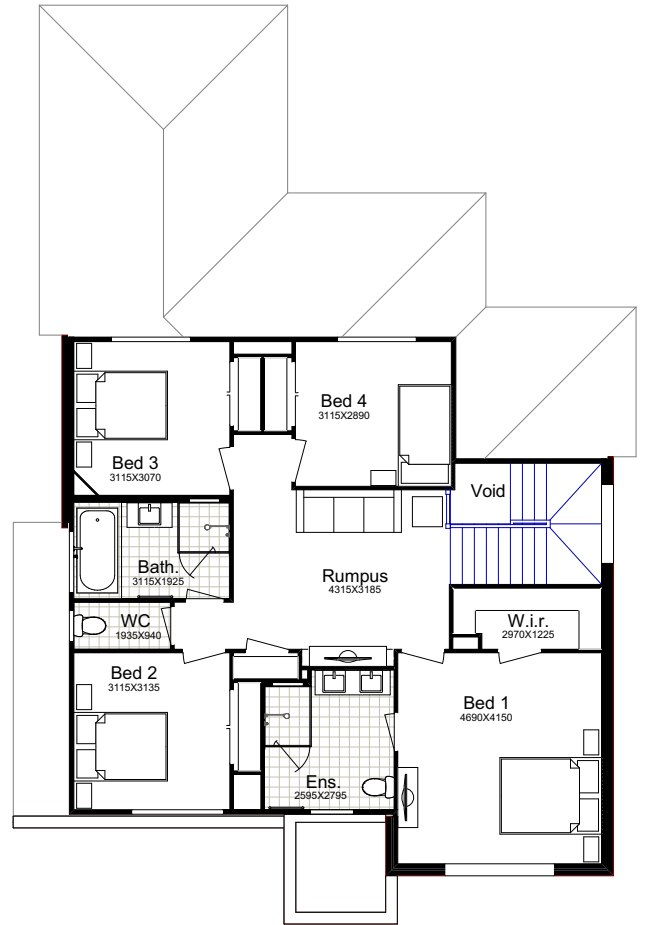
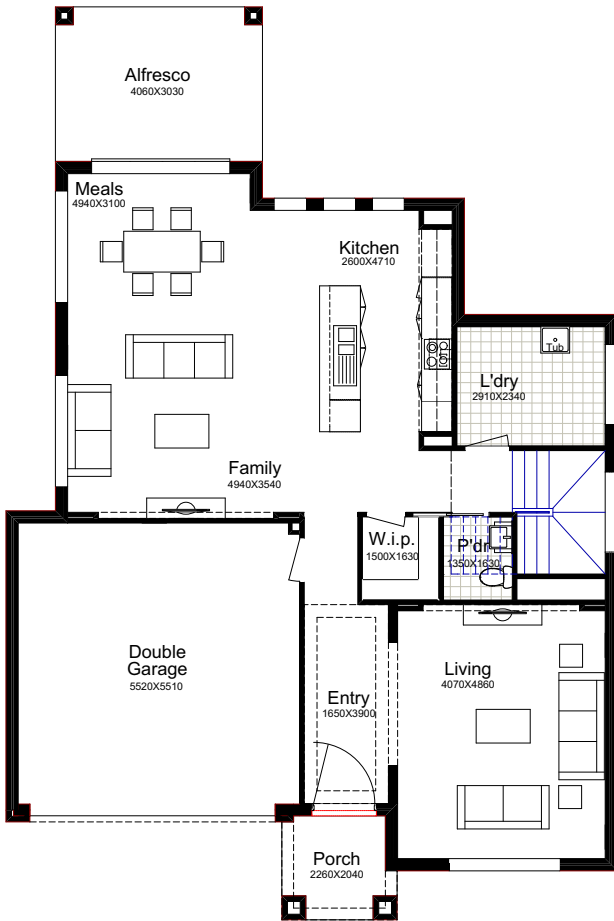
4  2.5  4  2 

Why Choose Better Built Homes?

At Better Built Homes we listen carefully to the lifestyle aspirations of our customers. We present you with the end price right up front, so there are no nasty cost surprises.

WATERBROOK 28

This plan is based on the Traditional Façade.



TRADITIONAL

Ground Floor	106.95m ²
First Floor	102.10m ²
Garage	33.94m ²
Alfresco	12.30m ²
Porch	4.36m ²
Total Area	259.65m²
House Width	11.99m
House Length	17.90m



URBAN

Total Area	259.52m²
House Width	11.99m
House Length	17.90m

MODERN

Total Area	263.13m²
House Width	11.99m
House Length	17.90m

Impressive facades and spacious living space. You'll love the free flowing meals, family and alfresco areas where life will be so relaxed. With four bedrooms, four living areas and lots more, this is an intelligent design. It will be love at first sight!

Façade Images shown on our brochures may feature alternative upgrades. Upgraded finishes are not included in the standard range or house design and should be used as a guide only. Plan dimensions, sizes & square meters will vary dependent on the chosen house façade & design. Better Built Homes reserves the right to revise plans, specifications & prices without notice or obligation. All plans are Copyright of Better Built Homes. Please consult your sales consultant for a full list of standard inclusions & façade options.