

ALLUKA 32

URBAN GALLERY FACADE



Images are for illustrative purposes only.



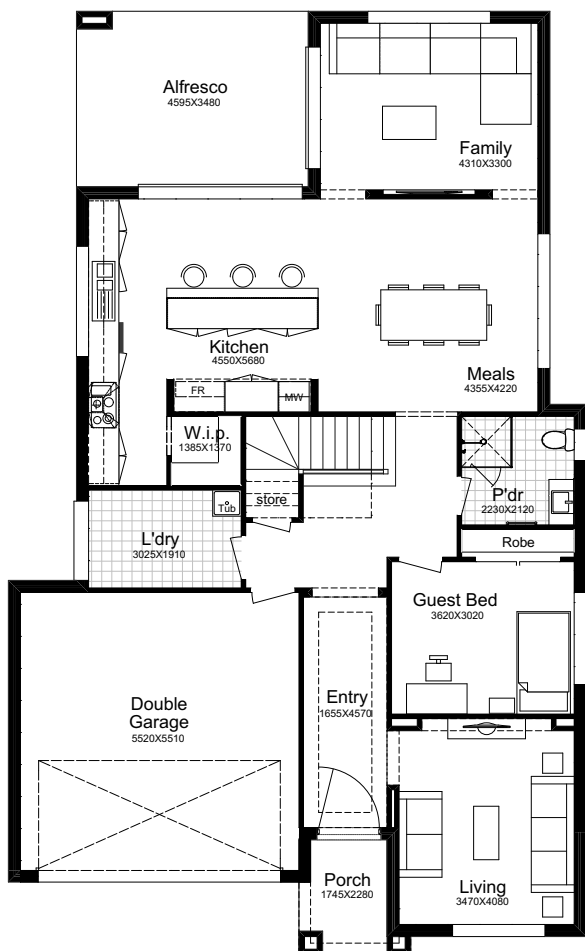
5  3  4  2 

Why Choose Better Built Homes?

At Better Built Homes we listen carefully to the lifestyle aspirations of our customers. We present you with the end price right up front, so there are no nasty cost surprises.

ALLUKA 32

This plan is based on the Traditional Facade.



TRADITIONAL

Ground Floor	130.30m ²
First Floor	110.82m ²
Garage	33.58m ²
Alfresco	15.99m ²
Porch	3.95m ²
Total Area	294.64m²
House Width	11.46m
House Length	18.70m

URBAN GALLERY

Total Area	303.18m²
House Width	11.46m
House Length	19.18m



MODERN

Total Area	294.99m²
House Width	11.46m
House Length	18.34m

A distinctive, two story, architectural design, Alluka epitomises the difference between a house and a home. It has the wow factor that will become your sanctuary with its retreat and stylish ensuite for your pampering. Check out the stunning facade options to make a real statement.

Façade Images shown on our brochures may feature alternative upgrades. Upgraded finishes are not included in the standard range or house design and should be used as a guide only. Plan dimensions, sizes & square meters will vary dependent on the chosen house façade & design. Better Built Homes reserves the right to revise plans, specifications & prices without notice or obligation. All plans are Copyright of Better Built Homes. Please consult your sales consultant for a full list of standard inclusions & façade options.