

ANITA 33

MODERN FACADE



Images are for illustrative purposes only.



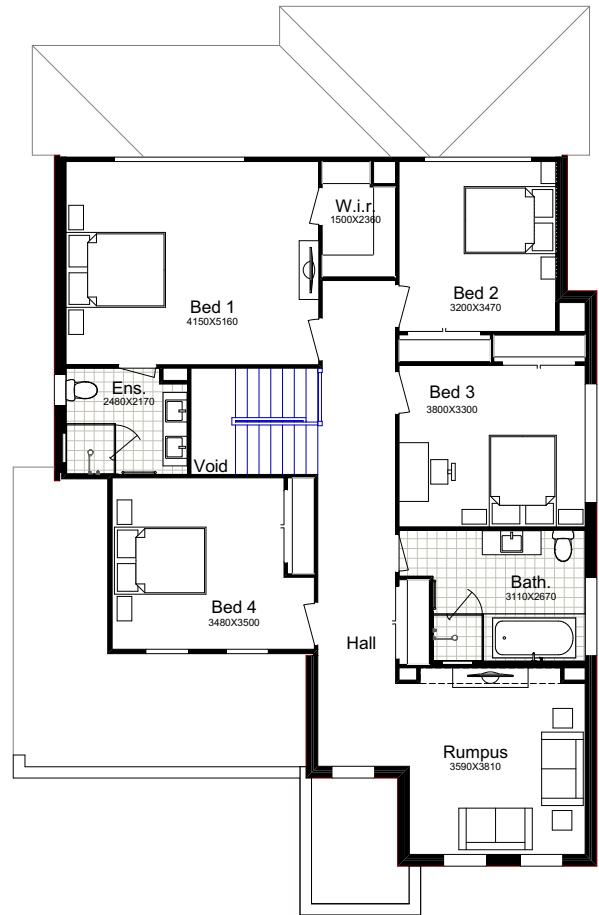
4  2.5  4  1  2 

Why Choose Better Built Homes?

At Better Built Homes we listen carefully to the lifestyle aspirations of our customers. We present you with the end price right up front, so there are no nasty cost surprises.

ANITA 33

This plan is based on the Traditional Façade.



TRADITIONAL



URBAN



TRADITIONAL

Ground Floor	124.57m ²
First Floor	129.24m ²
Garage	37.66m ²
Alfresco	12.81m ²
Porch	6.09m ²
Total Area	310.37m²
House Width	11.92m
House Length	18.11m

URBAN GALLERY

Total Area	313.75m²
House Width	11.92m
House Length	17.59m

MODERN

Total Area	313.47m²
House Width	11.92m
House Length	17.83m

This is an eye catching home created with space and comfort in mind. Entertaining or preparing meals for the family will be a breeze with a European kitchen featuring a classy designer bench. The double garage doors blend unobtrusively into the beautiful façade options available.

Façade Images shown on our brochures may feature alternative upgrades. Upgraded finishes are not included in the standard range or house design and should be used as a guide only. Plan dimensions, sizes & square meters will vary dependent on the chosen house façade & design. Better Built Homes reserves the right to revise plans, specifications & prices without notice or obligation. All plans are Copyright of Better Built Homes. Please consult your sales consultant for a full list of standard inclusions & façade options.