



Modern facade

LEXINGTON 46

the ultimate master suite



Hazelbrook facade



Hampton facade

OPTIONAL FACADES AVAILABLE: Branxton | Classic | Hunter | Traditional | Daintree | Swansea | Urban Gallery | Brighton | Leura



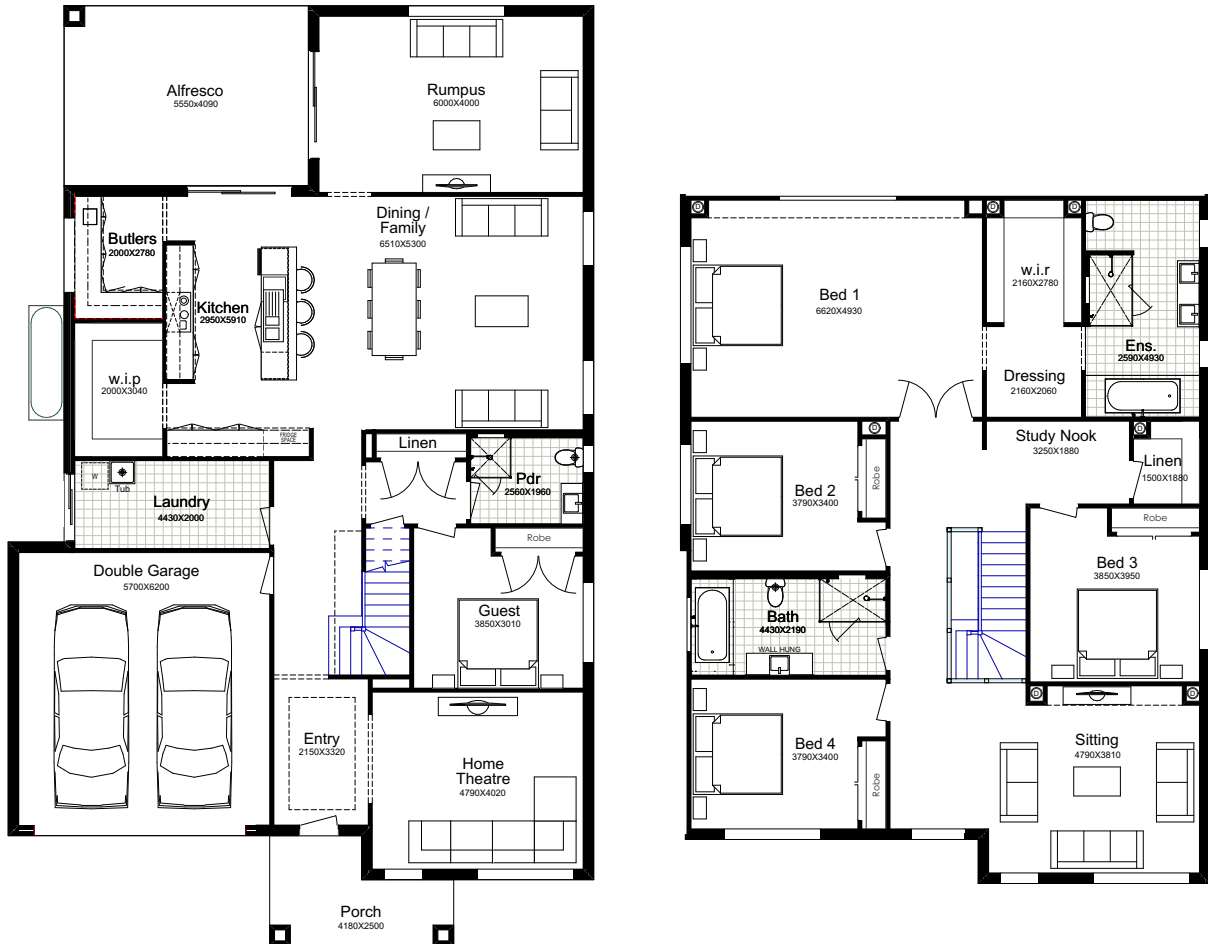
1300 100 922
betterbuilthomes.com.au

HOME BUILDERS SYDNEY & NSW - 2018, 2019 & 2020 AWARD WINNER

Facade Images shown on our brochures may feature alternative upgrades. Upgraded finishes are not included in the standard range or house design and should be used as a guide only. Plan dimensions, sizes & square meters will vary dependent on the chosen house facade & design. Better Built Homes reserves the right to revise plans, specifications & prices without notice or obligation. All plans are Copyright of Better Built Homes. Licence No. 244242C.

LEXINGTON 46

the ultimate master suite



Suits: 15m LOTS	Ground Floor: 178.30m ²	Garage: 39.51m ²	Porch: 11.08m ²	Width: 13.30m
	First Floor: 180.07m ²	Alfresco: 22.70m ²	Total: 431.66m ²	Depth: 21.35m



1300 100 922
betterbuilthomes.com.au

HOME BUILDERS SYDNEY & NSW - 2018, 2019 & 2020 AWARD WINNER

Façade Images shown on our brochures may feature alternative upgrades. Upgraded finishes are not included in the standard range or house design and should be used as a guide only. Plan dimensions, sizes & square meters will vary dependent on the chosen house façade & design. Better Built Homes reserves the right to revise plans, specifications & prices without notice or obligation. All plans are Copyright of Better Built Homes. Licence No. 244242C.