

ALEXA 42

URBAN GALLERY FACADE



Images are for illustrative purposes only.



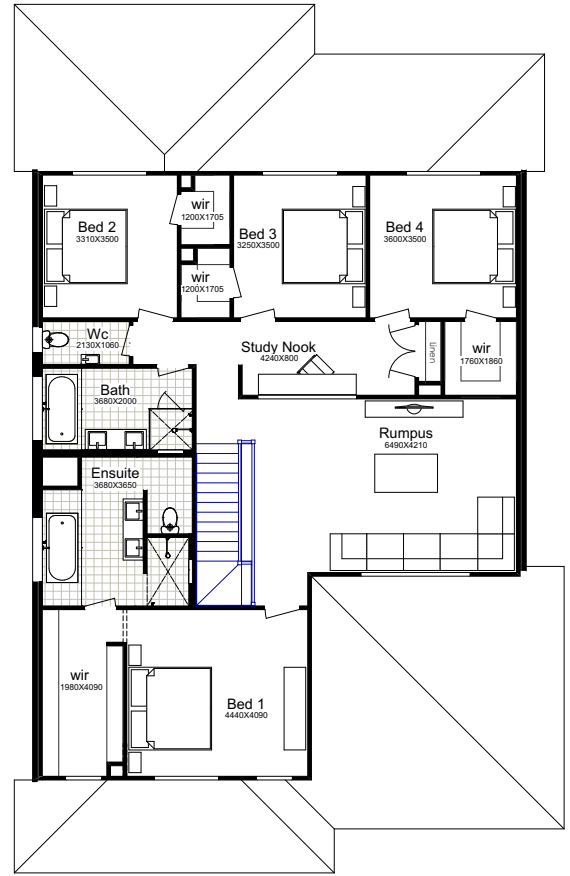
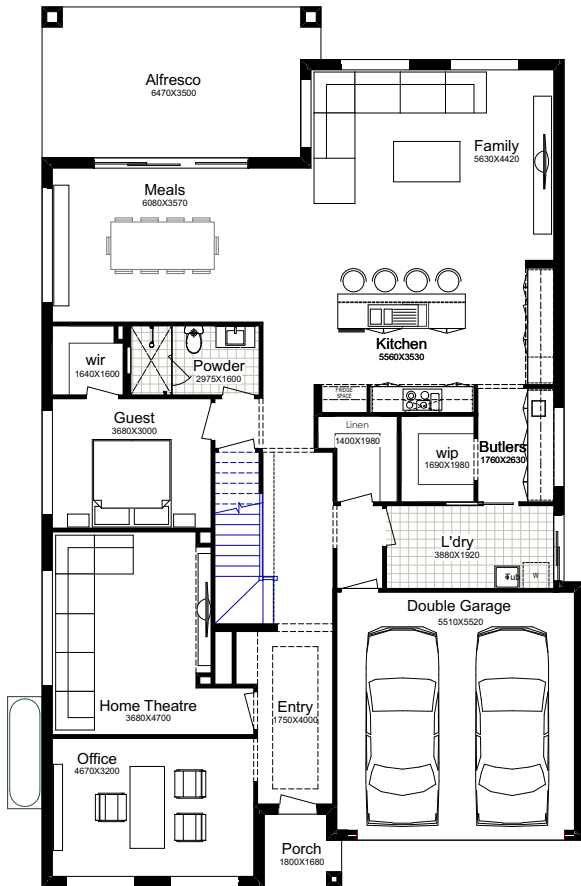
5  3  4  2  2 

Why Choose Better Built Homes?

At Better Built Homes we listen carefully to the lifestyle aspirations of our customers. We present you with the end price right up front, so there are no nasty cost surprises.

ALEXA 42

This plan is based on the Traditional Façade.



TRADITIONAL

Ground Floor	178.93m ²
First Floor	154.44m ²
Garage	34.27m ²
Alfresco	21.57m ²
Porch	2.81m ²
Total Area	392.02m²
House Width	12.59m
House Length	20.41m

MODERN

Total Area	395.60m²
House Width	12.59m
House Length	21.49m

URBAN GALLERY

Total Area	414.46m²
House Width	12.59m
House Length	21.85m

Standing majestically in your street you will be so proud of the two storey Alexa with its five spacious bedrooms. The Alexa design ticks all the right boxes for a growing family, cleverly crafted to accommodate for the essentials of a modern family plus little luxuries to match.

Façade Images shown on our brochures may feature alternative upgrades. Upgraded finishes are not included in the standard range or house design and should be used as a guide only. Plan dimensions, sizes & square meters will vary dependent on the chosen house façade & design. Better Built Homes reserves the right to revise plans, specifications & prices without notice or obligation. All plans are Copyright of Better Built Homes. Please consult your sales consultant for a full list of standard inclusions & façade options.