



Urban facade

# SIERRA 22

*maximum practicality*



Leura facade



Branxton facade

OPTIONAL FACADES AVAILABLE: Modern | Traditional | Hampton | Lawson | Classic | Kingston | Hunter



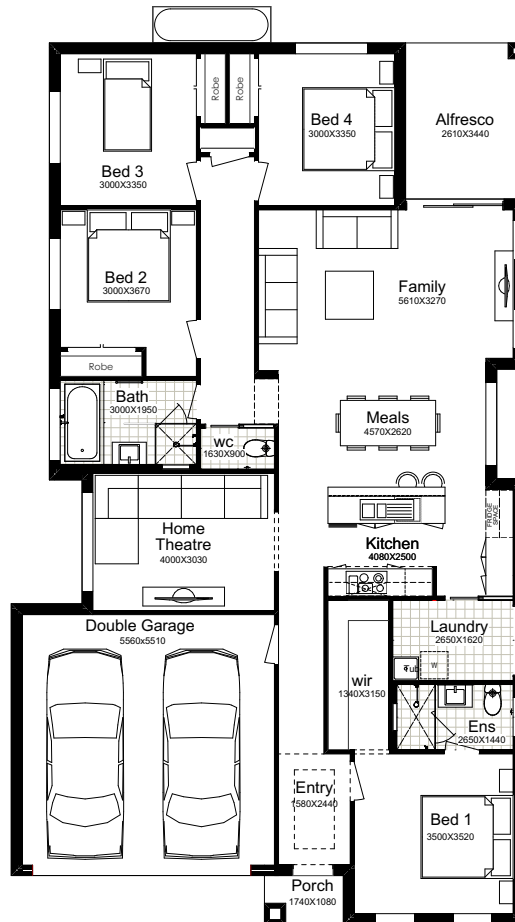
**1300 100 922**  
betterbuilthomes.com.au

HOME BUILDERS SYDNEY & NSW - 2018, 2019 & 2020 AWARD WINNER

Facade Images shown on our brochures may feature alternative upgrades. Upgraded finishes are not included in the standard range or house design and should be used as a guide only. Plan dimensions, sizes & square meters will vary dependent on the chosen house facade & design. Better Built Homes reserves the right to revise plans, specifications & prices without notice or obligation. All plans are Copyright of Better Built Homes. Licence No. 244242C.

# SIERRA 22

*maximum practicality*



Suits: <b>13.5m LOTS</b>	Ground Floor: <b>154.25m<sup>2</sup></b>	Alfresco: <b>8.98m<sup>2</sup></b>	Total: <b>199.74m<sup>2</sup></b>	Width: <b>11.30m</b>
	Garage: <b>34.63m<sup>2</sup></b>	Porch: <b>1.88m<sup>2</sup></b>		Depth: <b>19.43m</b>



**1300 100 922**  
betterbuilthomes.com.au

HOME BUILDERS SYDNEY & NSW - 2018, 2019 & 2020 AWARD WINNER

Façade Images shown on our brochures may feature alternative upgrades. Upgraded finishes are not included in the standard range or house design and should be used as a guide only. Plan dimensions, sizes & square meters will vary dependent on the chosen house façade & design. Better Built Homes reserves the right to revise plans, specifications & prices without notice or obligation. All plans are Copyright of Better Built Homes. Licence No. 244242C.