

b
better built
HOMES



THE LINDSAY

WELCOME TO THE LINDSAY

This welcoming single-storey home can be enhanced with all manner of facades, allowing you to give it the look that you prefer, whether it's with the Traditional, Modern, or Urban Facades. You can design what kind of curb appeal you prefer, from the warmth of a more Traditional look to the clean design of the contemporary Urban facade.

The Lindsay collection is designed to make as best a use of a single-storey as possible, with excellent spacing for four bedrooms, each immediately connected to or adjoined by a hall to the shared living spaces. Masterfully tucked between them are a range of walk-in storage and laundry rooms, that make it easy to meet all the practical needs of the family.

Modern space-saving design means that you're able to enjoy both your own personal space as well as shared family spaces in the open-plan kitchen, family and meals room, as well as the home theatre. The alfresco space to the rear of the home makes for an excellent dining and entertaining space, while the variety of windows allows you to easily maximise natural light.



LINDSAY 16

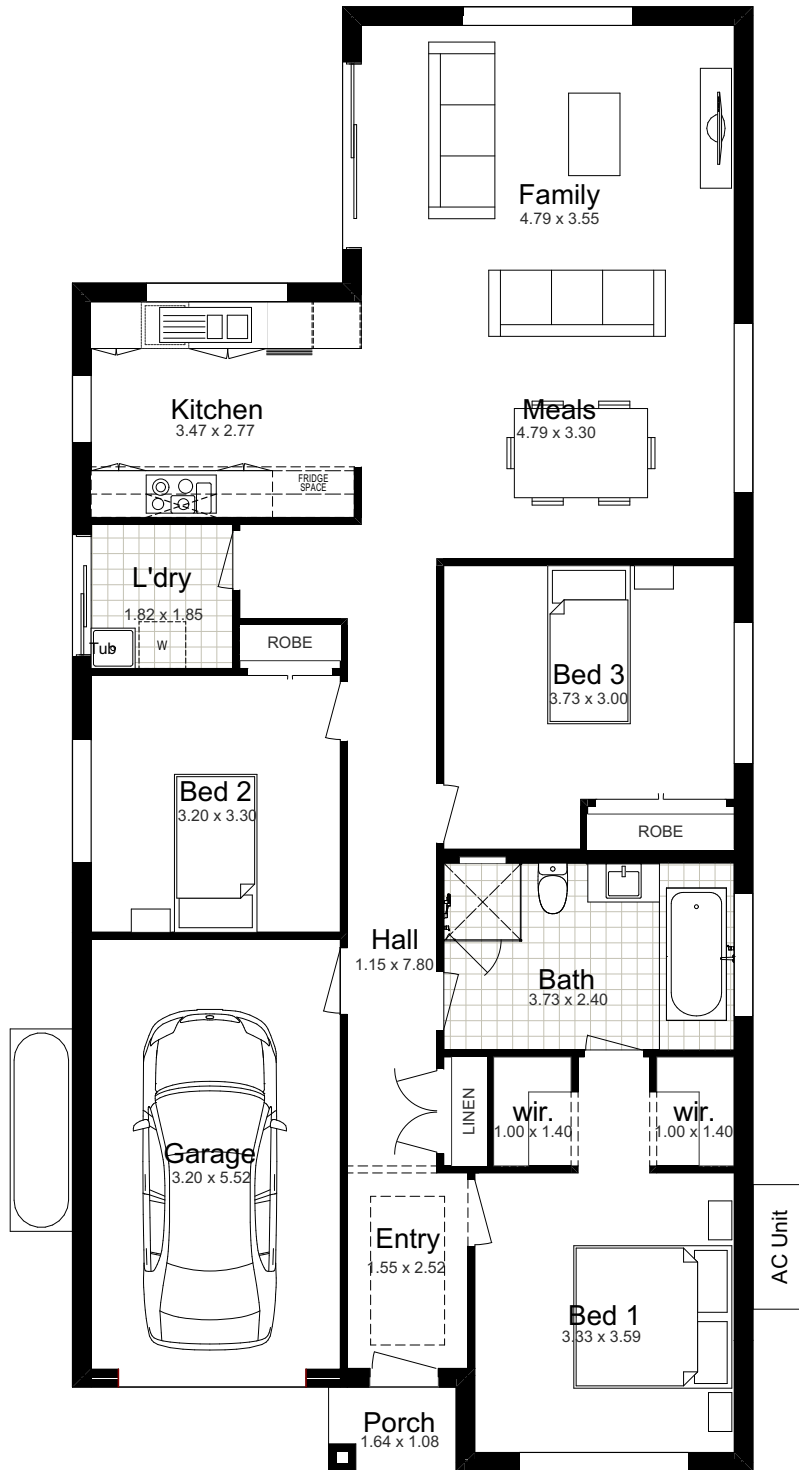
The Lindsay 16 is our practically well compact single-storey home design, accommodating to a growing family with a range of excellent shared spaces. With three bedrooms, one bathroom, an open-plan family, kitchen, and dining room, and plenty of practical spaces, it makes a great choice for young families.



SUITS 10m LOTS

TOTAL:	148.53m ²
WIDTH:	8.74m
DEPTH:	18.81m
GROUND FLOOR:	126.14m ²
GARAGE:	20.62m ²
PORCH:	1.77m ²

GROUND FLOOR



LINDSAY 18

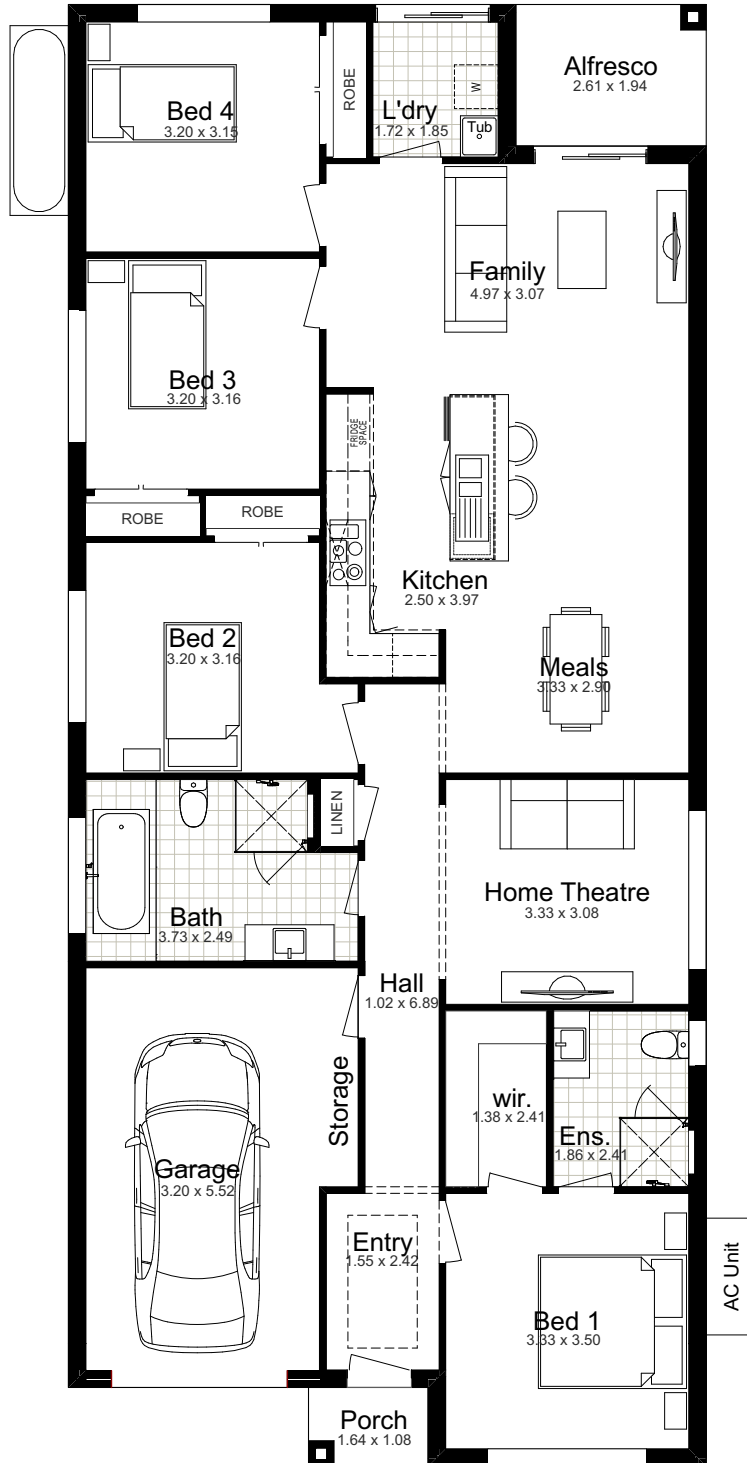
The Lindsay 18 is designed to make as best a use of a single-storey as possible, with excellent spacing for four bedrooms, each immediately connected to or adjoined by a hall to the shared living spaces. Masterfully tucked between them are a range of walk-in storage and laundry rooms, that make it easy to meet all the practical needs of the family.



SUITS 10m LOTS

TOTAL:	171.50m ²
WIDTH:	8.74m
DEPTH:	20.03m
GROUND FLOOR:	142.37m ²
GARAGE:	22.30m ²
PORCH:	1.77m ²
ALFRESCO	5.06m ²

GROUND FLOOR



LINDSAY 20

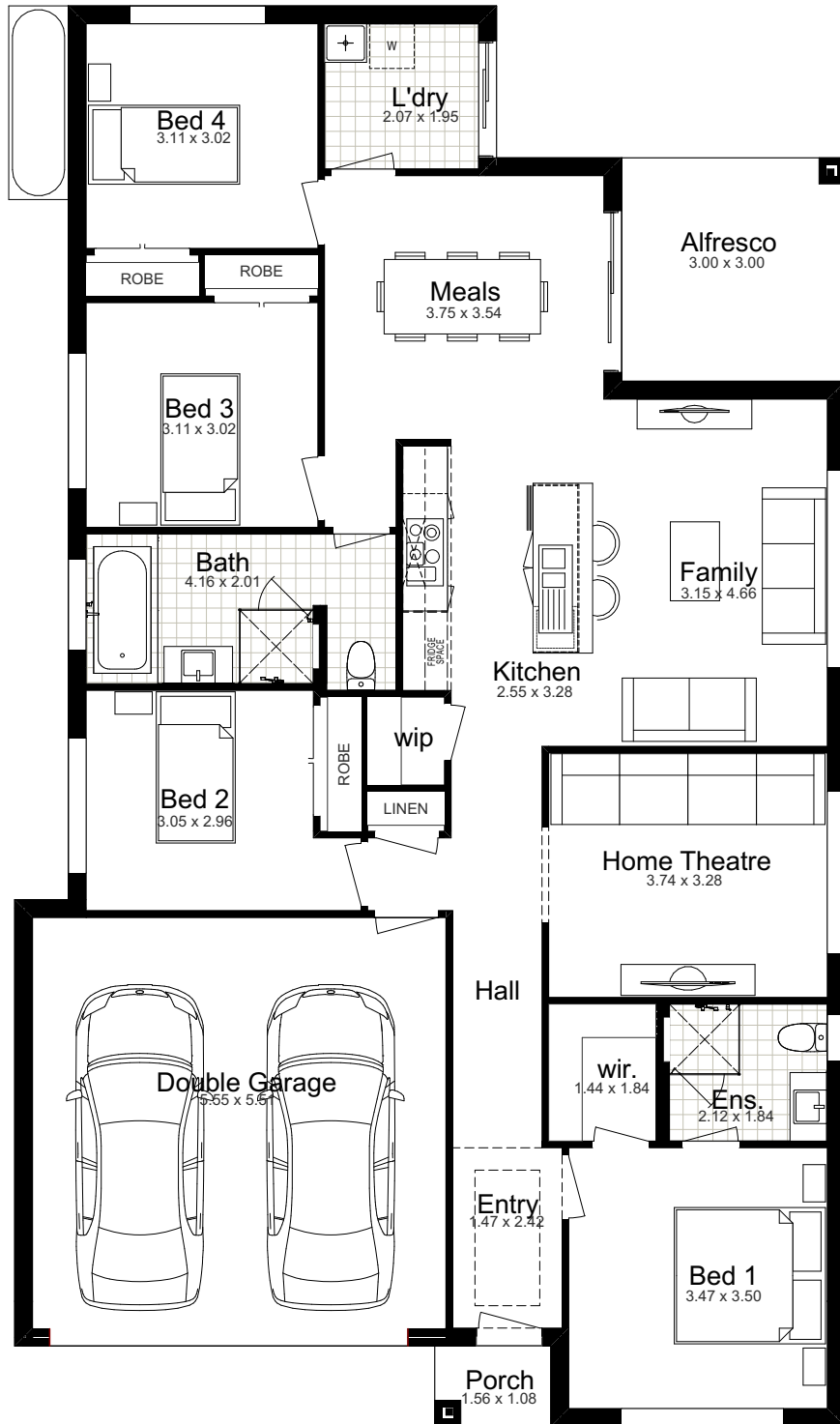
Modern space-saving design means that you're able to enjoy both your own personal space as well as shared family spaces in the open-plan kitchen, family and meals room, as well as the home theatre. The alfresco space to the rear of the home makes for an excellent dining and entertaining space, while the variety of windows allows you to easily maximise natural light.



SUITS 13m LOTS

TOTAL:	188.34m ²
WIDTH:	11.15m
DEPTH:	19.07m
GROUND FLOOR:	144.20m ²
GARAGE:	33.46m ²
PORCH:	1.68m ²
ALFRESCO	9.00m ²

GROUND FLOOR



FACADE OPTIONS



Façade Images shown on our brochures may feature alternative upgrades. Upgraded finishes are not included in the standard range or house design and should be used as a guide only. Plan dimensions, sizes & square metres will vary dependent on the chosen house façade & design. Better Built Homes reserves the right to revise plans, specifications & prices without notice or obligation. All plans are a Copyright of Better Built Homes. Please consult your sales consultant for a full list of standard inclusions & façade options.

FACADE OPTIONS



Façade Images shown on our brochures may feature alternative upgrades. Upgraded finishes are not included in the standard range or house design and should be used as a guide only. Plan dimensions, sizes & square metres will vary dependent on the chosen house façade & design. Better Built Homes reserves the right to revise plans, specifications & prices without notice or obligation. All plans are a Copyright of Better Built Homes. Please consult your sales consultant for a full list of standard inclusions & façade options.

21.03.2024



better built
HOMES

1300 100 922

Unit 3, 13 Renshaw Street, Cranebrook NSW 2749
info@betterbuilthomes.com.au

betterbuilthomes.com.au

