



Images are for illustrative purposes only.
*T&Cs Apply. Price is for Traditional facade only.

ALLIRA 24

HOUSE & LAND PACKAGE

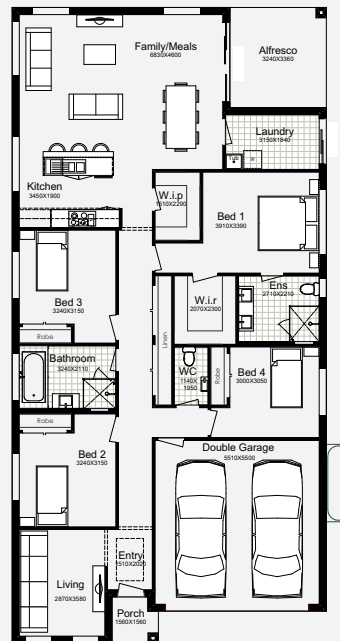
\$1,294,425*

4 2 2

House Size: 288.1m²
Land Size: 458.1m²

Lot 265,
Proposed Road,
Leppington
NSW 2179

Contact:
Ben Mallard
Phone:
0435 959 331
Email:
ben@betterbuilthomes.com.au



Better Built
Homes

1300 100 922
betterbuilthomes.com.au

HOME BUILDERS SYDNEY & NSW - 2018, 2019 & 2020 AWARD WINNER

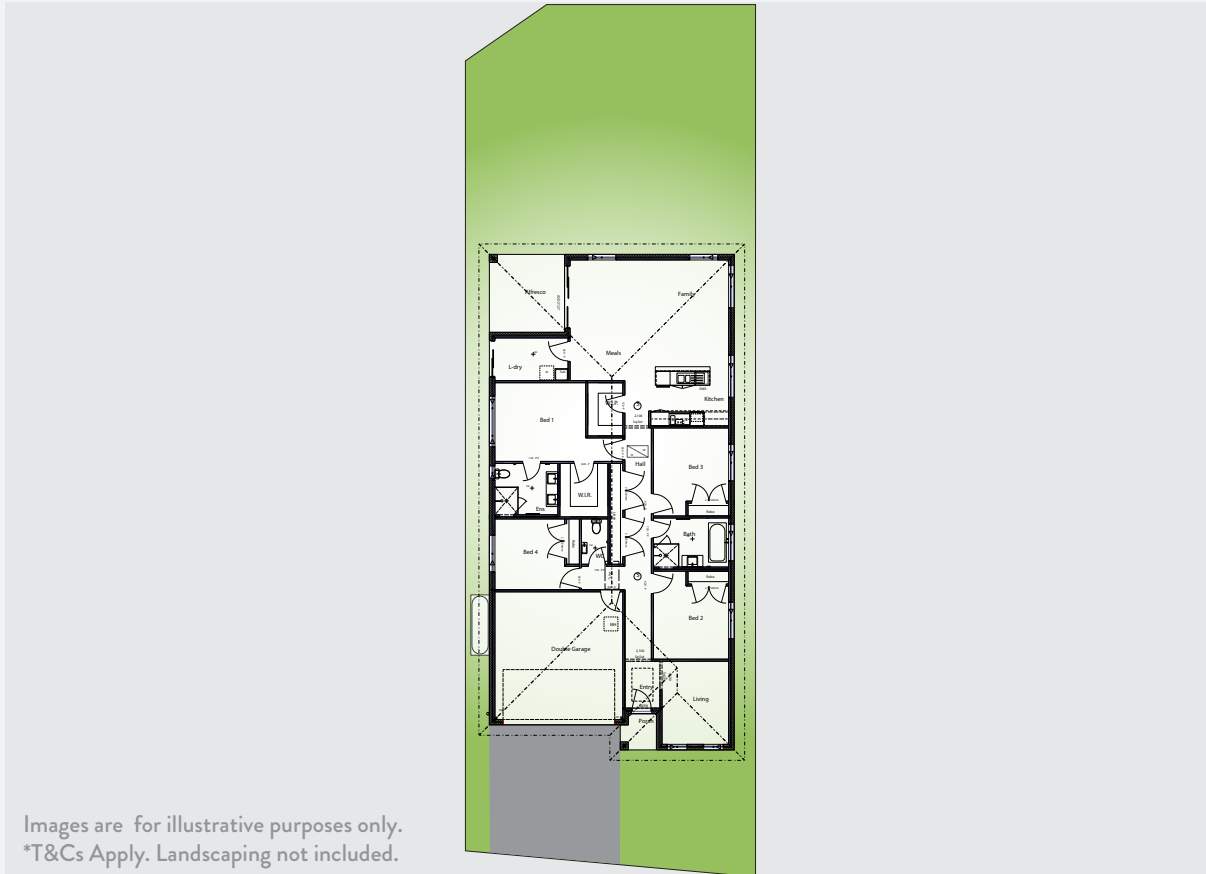
Facade Images shown on our brochures may feature alternative upgrades. Upgraded finishes are not included in the standard range or house design and should be used as a guide only. Plan dimensions, sizes & square meters will vary dependent on the chosen house facade & design. Better Built Homes reserves the right to revise plans, specifications & prices without notice or obligation. All plans are Copyright of Better Built Homes. Licence No. 244242C.

ALLIRA 24

HOUSE & LAND PACKAGE

\$1,294,425*

TRADITIONAL FACADE	Ground Floor: 171.94m ²	Alfresco: 10.89m ²	Total: 219.16m ²	Width: 10.55m
	Garage: 34.06m ²	Porch: 2.27m ²		Depth: 21.35m



BETTER LIVING + INSPIRE PROMOTION

- 2450mm high ceilings
 - Tiled splashback to kitchen
 - Fixed site costs
 - "Everyday Life" brick range
 - Double bowl drop sink to kitchen
 - 2.0kw solar system
 - COLORBOND roofing
 - Westinghouse oven
 - Ducted air conditioning
 - Hume entry door
 - Westinghouse gas cooktop
 - Cold water point
 - 90mm frames
 - Westinghouse rangehood
 - Plus much more!
 - Caesarstone benchtops
 - Quality Assurance Program
- + DRIVEWAY INCLUDED**
- Caesarstone vanities
 - 5 star customer service



1300 100 922
betterbuilt homes.com.au

HOME BUILDERS SYDNEY & NSW - 2018, 2019 & 2020 AWARD WINNER