



THE BELROSE

WELCOME TO THE BELROSE

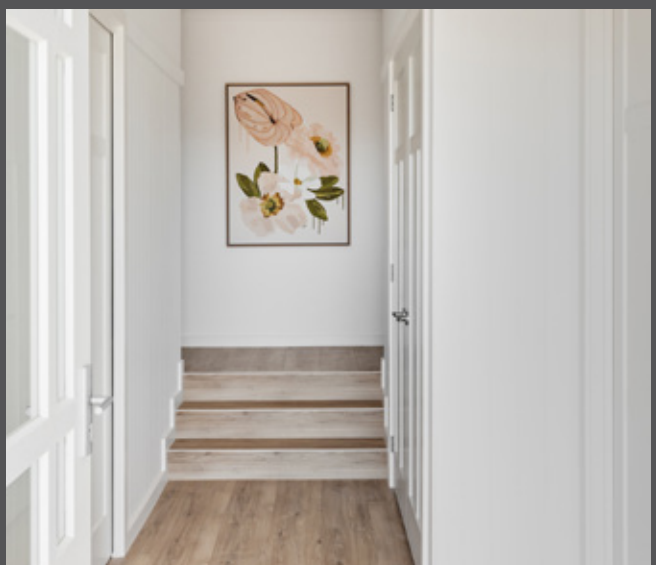
Designed with a modern family in mind to provide all the features needed for everyday life. The Belrose is a liveable home design you can see your family growing up in. Our architects and interior designers both love the open floor plan kitchen to living area that draws you out to the alfresco on warm days. With this area being at the rear of the home, it creates a comforting feeling in the family home.

The surprising size of the interior is what stands out most to us about the Belrose range. The spread-out, large floor plan makes the Belrose home designs ideal for a large, young family. Plus, with plenty of living areas and entertaining areas for family and guests, this home design makes great use of space for every occasion.



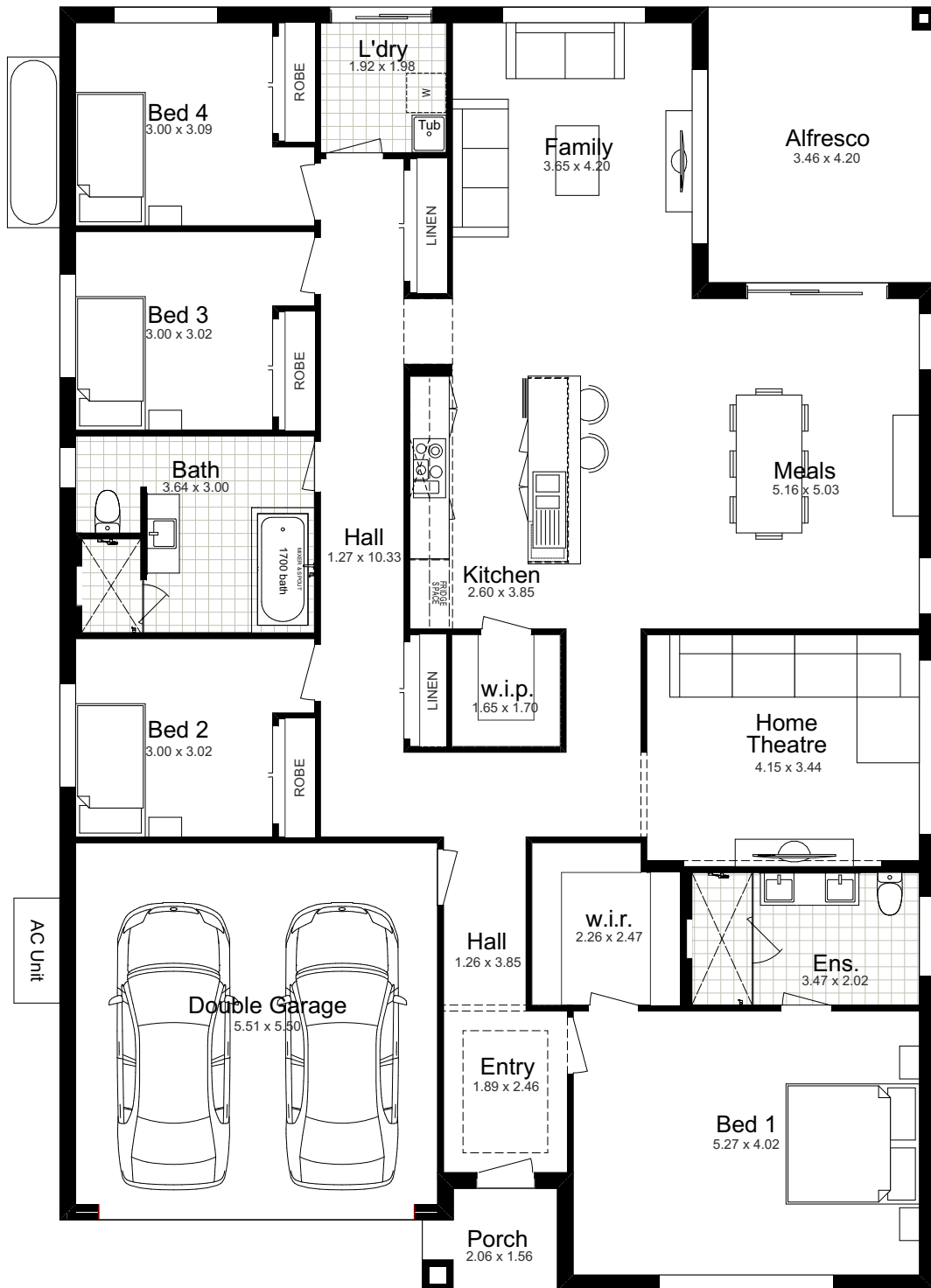
FEATURED DESIGN

THE BELROSE 27



The Belrose 27 is perfect for new parents in Australia wanting to write their future. With a lively home design and a liveable floor plan, this home combines practicality with relaxation to suit the family lifestyle. Traditional or contemporary, light or dark shades, the choices are vast and all yours to make.

GROUND FLOOR



3D VIRTUAL TOUR AVAILABLE
VISIT OUR WEBSITE TO FIND OUT MORE



4



2



2



3



-

BELROSE 24

The Belrose home design is a flexible and well-thought-out floor plan, designed with a modern family in mind. Our architects and interior designers both love the open floor plan kitchen to living area draws you out to the alfresco on warm days. With this area being at the end of the home, it creates a comforting feeling to the family home



SUITS 15m LOTS

TOTAL:	218.92m ²
WIDTH:	13.07m
DEPTH:	17.50m
GROUND FLOOR:	171.92m ²
GARAGE:	36.47m ²
PORCH:	3.02m ²
ALFRESCO	7.51m ²

GROUND FLOOR



3



2



2



3



-

BELROSE 27

With a lively home design and a liveable floor plan, this home combines practicality with relaxation to suit the family lifestyle.

Traditional or contemporary, light or dark shades, the choices are vast and all yours to make. This 4 large bedroom single-storey home design is perfect for new Australian families, perfectly combining compactness and practicality for seamless living.



SUITS 10m LOTS

TOTAL:	254.64m ²
WIDTH:	13.07m
DEPTH:	17.50m
GROUND FLOOR:	203.00m ²
GARAGE:	34.05m ²
PORCH:	3.06m ²
ALFRESCO	14.53m ²

GROUND FLOOR



4



2



2



3



-

FACADE OPTIONS

CLASSIC (MODIFIED)



MODERN



WOODVALE



Façade Images shown on our brochures may feature alternative upgrades. Upgraded finishes are not included in the standard range or house design and should be used as a guide only. Plan dimensions, sizes & square metres will vary dependent on the chosen house façade & design. Better Built Homes reserves the right to revise plans, specifications & prices without notice or obligation. All plans are a Copyright of Better Built Homes. Please consult your sales consultant for a full list of standard inclusions & façade options.

FACADE OPTIONS



Façade Images shown on our brochures may feature alternative upgrades. Upgraded finishes are not included in the standard range or house design and should be used as a guide only. Plan dimensions, sizes & square metres will vary dependent on the chosen house façade & design. Better Built Homes reserves the right to revise plans, specifications & prices without notice or obligation. All plans are a Copyright of Better Built Homes. Please consult your sales consultant for a full list of standard inclusions & façade options.

21.03.2024



1300 100 922

Unit 3, 13 Renshaw Street, Cranebrook NSW 2749
info@betterbuilthomes.com.au

betterbuilthomes.com.au

