



better built

HOMES



THE FAIRLIGHT

3D VIRTUAL TOUR AVAILABLE

VISIT OUR WEBSITE TO VIEW TOUR FOR YOURSELF

WELCOME TO THE FAIRLIGHT

As showcased in both the Oak & Orange Dream Home 7 and 8, as well as our brief pop-up display home that had a limited-time opening, this expansive 5-bedroom design holds a special place in our hearts. The standout feature, which we adore, is the generous number and size of the windows. Every room is awash with an abundance of natural light, offering not only aesthetic appeal but also contributing positively to your body's internal clock and circadian rhythms. In larger homes, an ample infusion of natural light is indispensable, imbuing the entertainment spaces with an inviting and airy warmth.

Our team of designers holds a particular fondness for the grand entrance and hallway found in our Fairlight home design series. It serves as the perfect welcome for your guests, seamlessly guiding them to the open living area. With its roomy hallway, the Fairlight series provides the ideal canvas for a statement staircase, adding that extra touch of 'wow' to your home. Speaking of remarkable features, this home has been ingeniously designed to accommodate a swimming pool, promising increased entertainment opportunities for children during the summer months.

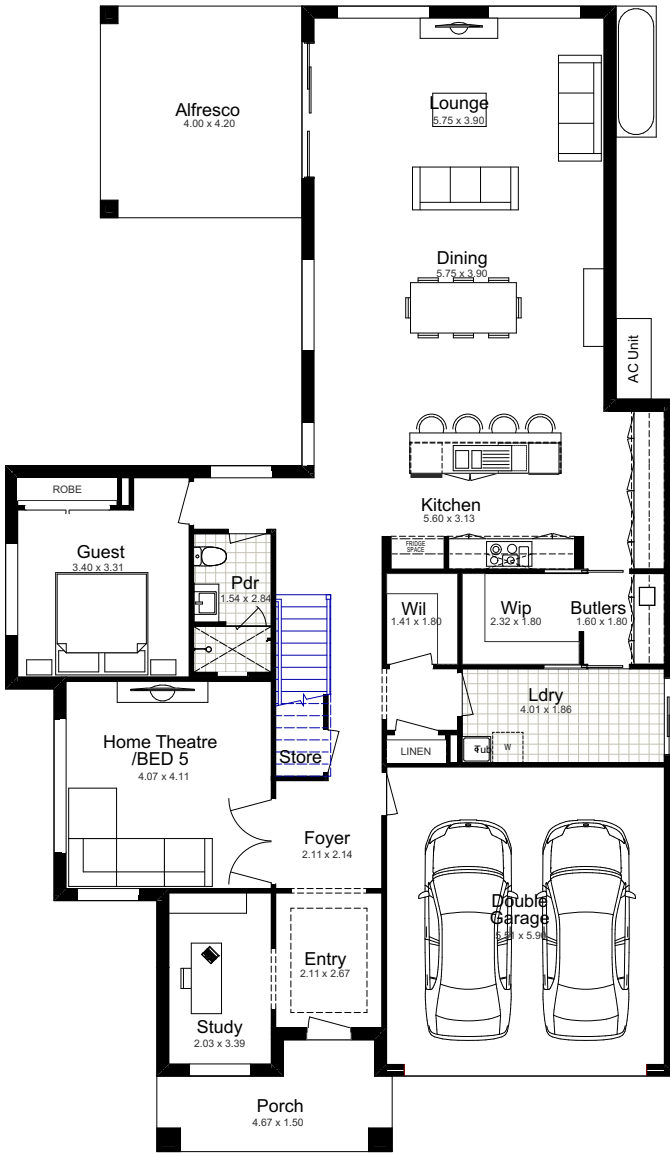
The laundry area boasts an impressive level of spaciousness, providing an ideal and highly functional hub for your everyday chores. With ample room to sort, wash, and fold your clothes, this space makes laundry a breeze. As you envision your dream home, it's hard to imagine needing anything more. Whether it's the convenience of an organised laundry room or the overall comfort and functionality of your living space, this home series offers all the key elements to turn your dreams into a reality.



FEATURED DESIGN
THE FAIRLIGHT 40



Step inside, and you'll be greeted by a cozy atmosphere that evokes the charm of an American barn, with its classic, timeless design. Beyond the captivating aesthetics, this home is a well-oiled machine. All engine rooms (laundry, butlers and walk in pantry) are thoughtfully connected, ensuring a seamless flow that enhances the functionality of the entire space.



GROUND FLOOR



FIRST FLOOR

AS SEEN ON OAK & ORANGE DREAM HOME 8 - 3D VIRTUAL TOUR AVAILABLE

VISIT OUR WEBSITE TO FIND OUT MORE



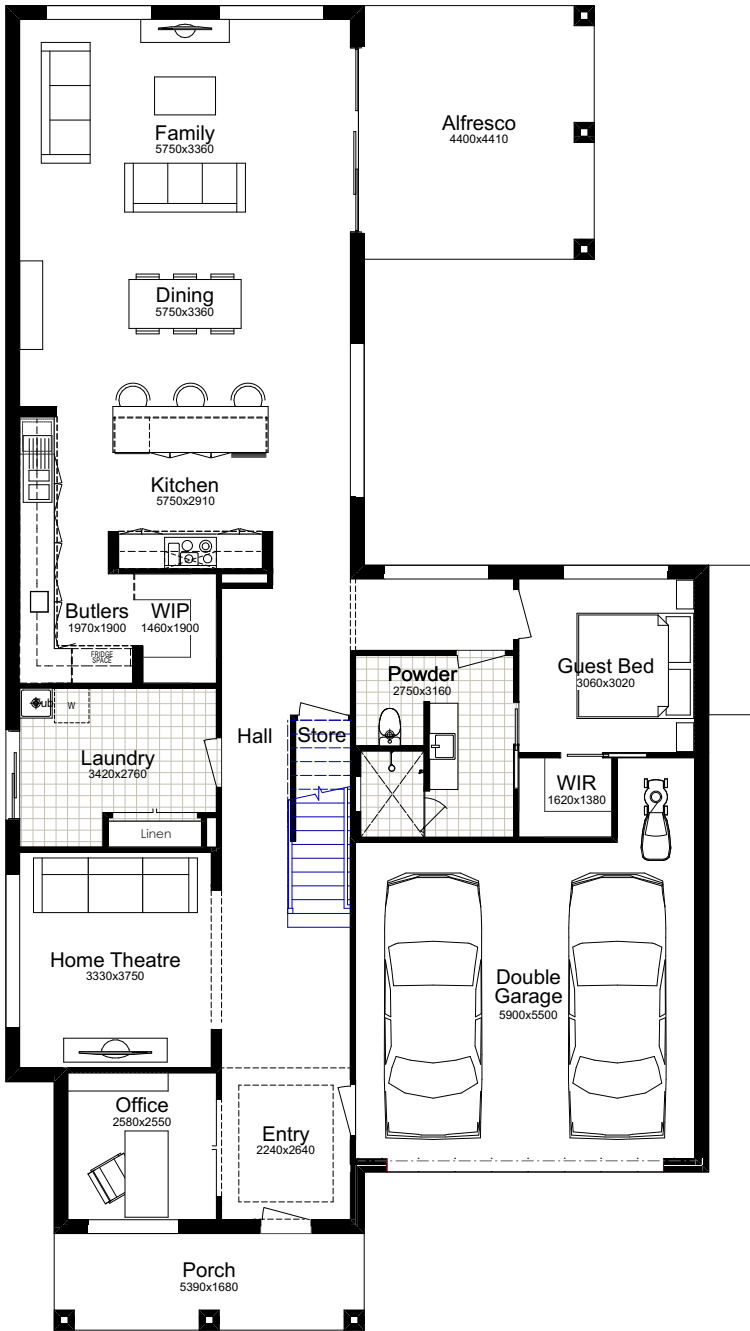
FAIRLIGHT 38

Our designers love how the entry flows seamlessly from the hallway to the open kitchen and living areas. Offering family and guests a natural anchor to the heart of the home to be together, the Fairlight 38 is a home just waiting to be admired. Our designers also love how the office is tucked away at the front corner of the house to separate work from everyday life. We make it easier for people working from home to maintain their work-life balance.

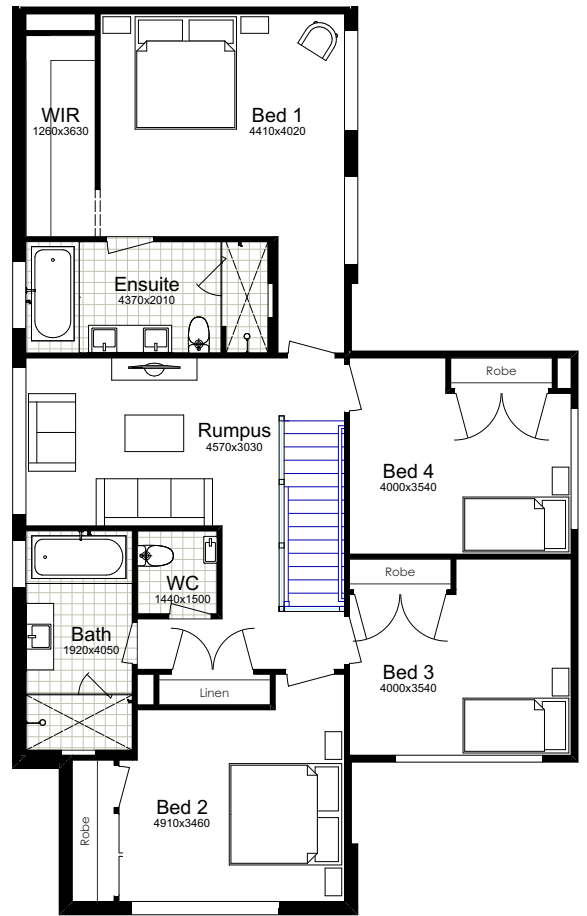


SUITS 14m LOTS

TOTAL:	349.68m ²
WIDTH:	12.22m
DEPTH:	20.03m
GROUND FLOOR:	155.29m ²
FIRST FLOOR:	128.99m ²
GARAGE:	38.70m ²
PORCH:	9.06m ²
ALFRESCO:	17.64m ²



GROUND FLOOR



FIRST FLOOR



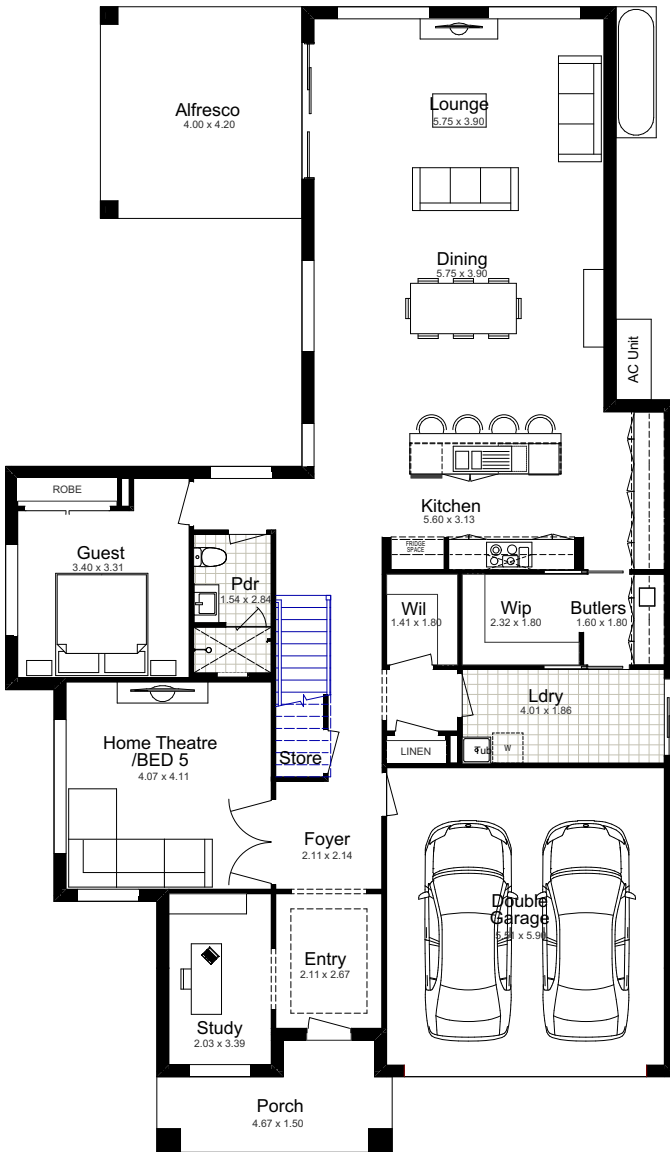
FAIRLIGHT 40

With the Fairlight 40, you'll experience the best of both worlds – the charm of a classic American barn and the practicality of modern design. It's a place where you can truly feel at home while enjoying the ease of a thoughtfully planned living space. As seen in Oak & Orange Dream Home 8 series.



SUITS 16.5m LOTS

TOTAL:	375.85m ²
WIDTH:	13.31m
DEPTH:	22.73m
GROUND FLOOR:	168.39m ²
FIRST FLOOR:	146.93m ²
GARAGE:	35.42m ²
PORCH:	8.31m ²
ALFRESCO:	16.80m ²



GROUND FLOOR



FIRST FLOOR

3D VIRTUAL TOUR AVAILABLE

VISIT OUR WEBSITE TO FIND OUT MORE



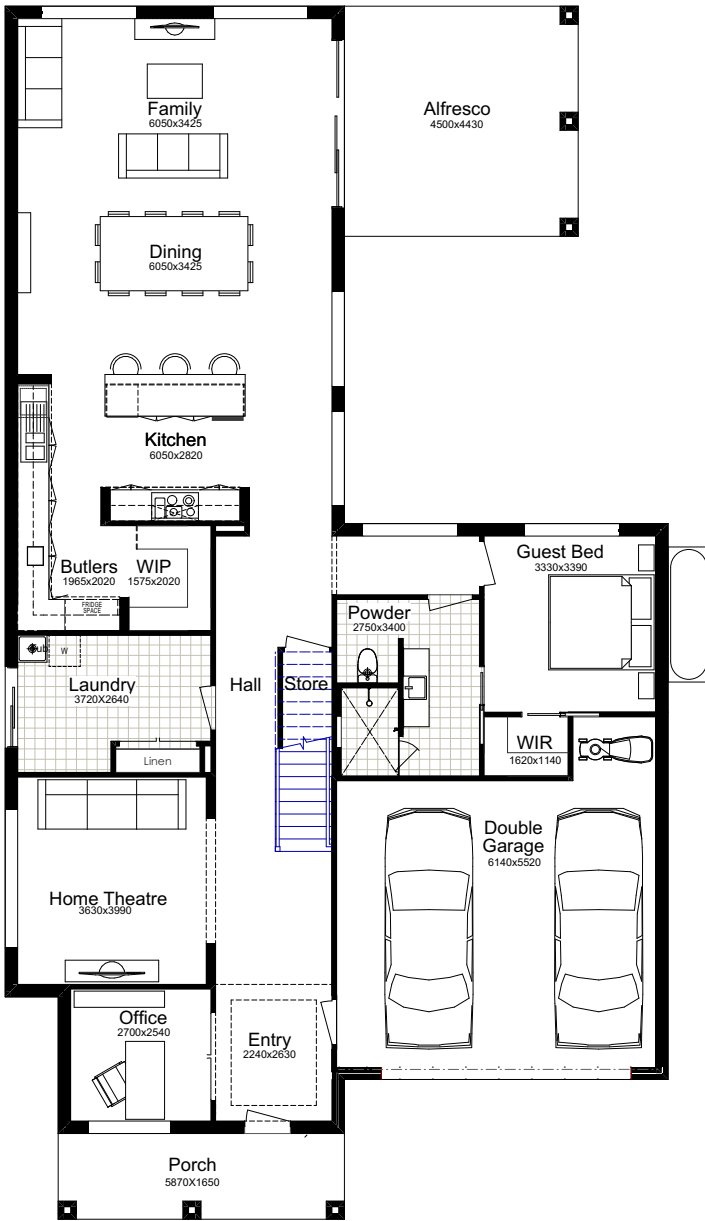
FAIRLIGHT 42

Our designers love the grand entrance and hallway of our Fairlight 42 home design. It provides the best greeting area for guests, flowing straight to the open living area. Boasting a spacious hallway, the Fairlight 42 gives the best opportunity for a statement staircase to provide an extra 'wow' factor to your home. Speaking of wow, this home has been cleverly crafted to squeeze in a swimming pool. That means more entertainment for the kids in summer.

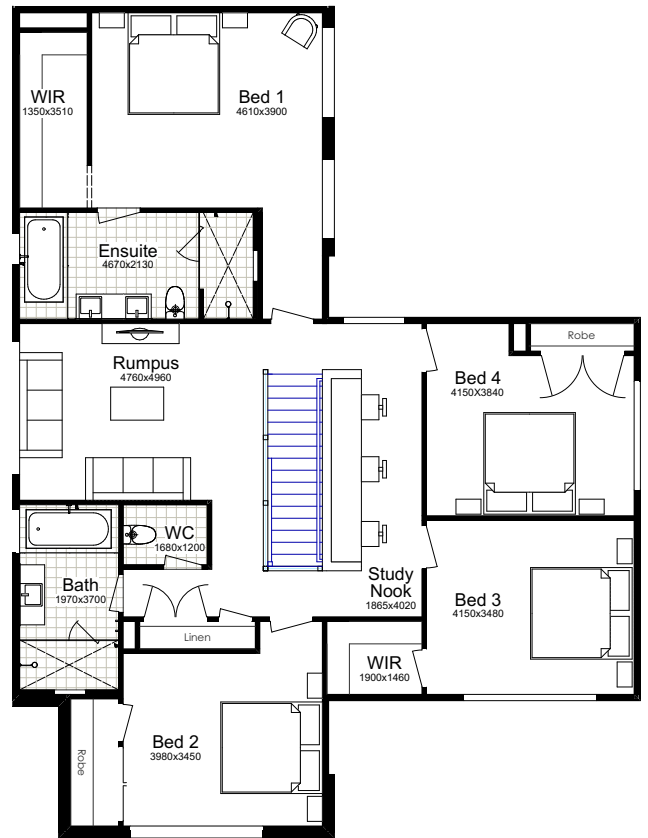


SUITS 15m LOTS

TOTAL:	386.75m ²
WIDTH:	12.76m
DEPTH:	23.35m
GROUND FLOOR:	165.23m ²
FIRST FLOOR:	152.05m ²
GARAGE:	40.44m ²
PORCH:	9.09m ²
ALFRESCO:	19.94m ²



GROUND FLOOR



FIRST FLOOR



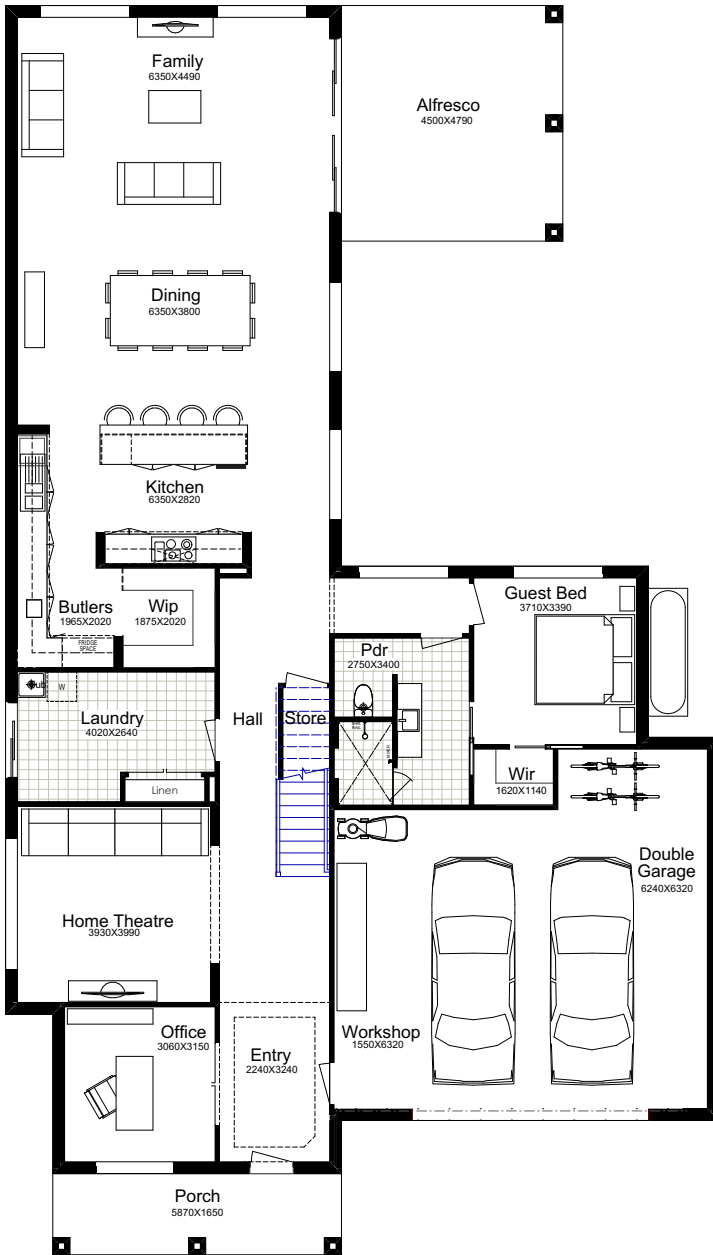
FAIRLIGHT 48

As seen on the Oak & Orange Dream Home 7, our favourite part of this spacious 5 bedroom design is the sheer number and size of the windows. Each room will be flooded with natural light, which doesn't only look great, but is great for your body clock and circadian rhythms too! Plenty of natural light is essential in a bigger build property, helping bring an inviting and airy warmth to the entertaining areas.

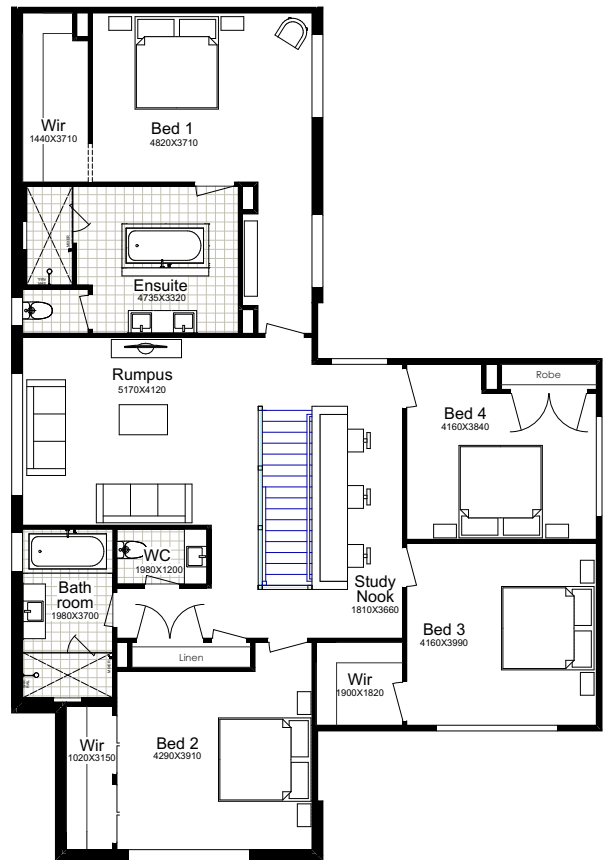


SUITS 16.5m LOTS

TOTAL:	446.23m ²
WIDTH:	14.51m
DEPTH:	25.40m
GROUND FLOOR:	185.31m ²
FIRST FLOOR:	174.27m ²
GARAGE:	55.40m ²
PORCH:	9.69m ²
ALFRESCO:	21.56m ²



GROUND FLOOR



FIRST FLOOR

3D VIRTUAL TOUR AVAILABLE

VISIT OUR WEBSITE TO FIND OUT MORE



FACADE OPTIONS

MONTANA (AXON)



MAYBERRY



AUGUSTINE



Façade Images shown on our brochures may feature alternative upgrades. Upgraded finishes are not included in the standard range or house design and should be used as a guide only. Plan dimensions, sizes & square metres will vary dependent on the chosen house façade & design. Better Built Homes reserves the right to revise plans, specifications & prices without notice or obligation. All plans are a Copyright of Better Built Homes. Please consult your sales consultant for a full list of standard inclusions & façade options.

FACADE OPTIONS



Facade Images shown on our brochures may feature alternative upgrades. Upgraded finishes are not included in the standard range or house design and should be used as a guide only. Plan dimensions, sizes & square metres will vary dependent on the chosen house facade & design. Better Built Homes reserves the right to revise plans, specifications & prices without notice or obligation. All plans are a Copyright of Better Built Homes. Please consult your sales consultant for a full list of standard inclusions & facade options.

FACADE OPTIONS



CLASSIC (MODIFIED)



TRADITIONAL



LEURA

Façade Images shown on our brochures may feature alternative upgrades. Upgraded finishes are not included in the standard range or house design and should be used as a guide only. Plan dimensions, sizes & square metres will vary dependent on the chosen house façade & design. Better Built Homes reserves the right to revise plans, specifications & prices without notice or obligation. All plans are a Copyright of Better Built Homes. Please consult your sales consultant for a full list of standard inclusions & façade options.

FACADE OPTIONS



Façade Images shown on our brochures may feature alternative upgrades. Upgraded finishes are not included in the standard range or house design and should be used as a guide only. Plan dimensions, sizes & square metres will vary dependent on the chosen house façade & design. Better Built Homes reserves the right to revise plans, specifications & prices without notice or obligation. All plans are a Copyright of Better Built Homes. Please consult your sales consultant for a full list of standard inclusions & façade options.



07.03.2024



better built
HOMES

1300 100 922

Unit 3, 13 Renshaw Street, Cranebrook NSW 2749
info@betterbuilthomes.com.au

betterbuilthomes.com.au

