

House & Land Package



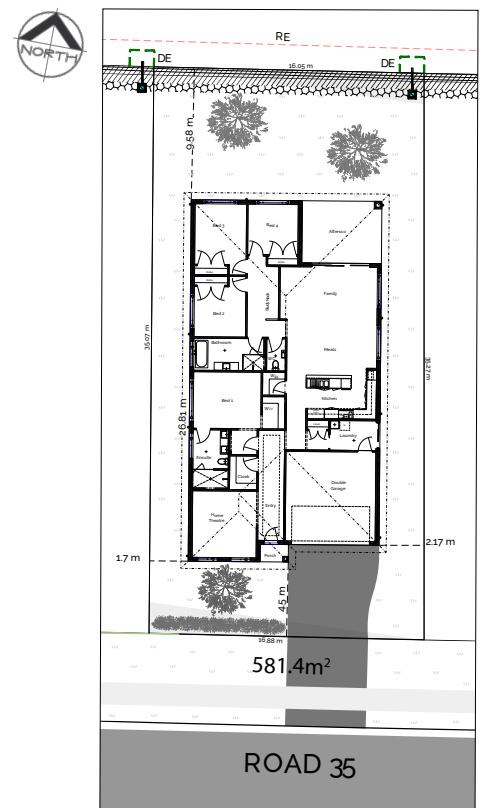
Package Price
\$1,644,250*

Lot 2007
Ploughmans Boulevard,
North Richmond, NSW 2754

Merrillie Beech
0413 233 752
merrillie@betterbuilt homes.com.au

BETTER LUXURY + OPULENCE PROMOTION

- Caesarstone 40mm benchtop to kitchen, including island bench with waterfall edges.
- Outdoor kitchen with Beefeater rangehood and BBQ Cooktop and stone benchtop.
- Polyurethane 500 series 'Shaker' kitchen cabinets.
- Butler's pantry with 40mm stone benchtops and 'Shaker' cabinetry
- Fireplace and chimney feature
- Laminate floor finishing.
- Laundry cabinetry
- Undermount double bowl sink.
- Westinghouse microwave.
- Westinghouse Oven, Cooktop and Rangehood.
- Glass splashback to kitchen.
- 2900mm ceilings.
- 1200mm wide entrance door.
- Floor tiling to porch & alfresco.
- Bathroom floor to ceiling tiling.
- Posh Solus free standing bath.
- LED downlights x 15.
- Taubmans 3 coat paint system.
- Hills 4 zone alarm system.
- Driveway, Landscaping & fencing included.
- Plus much more!



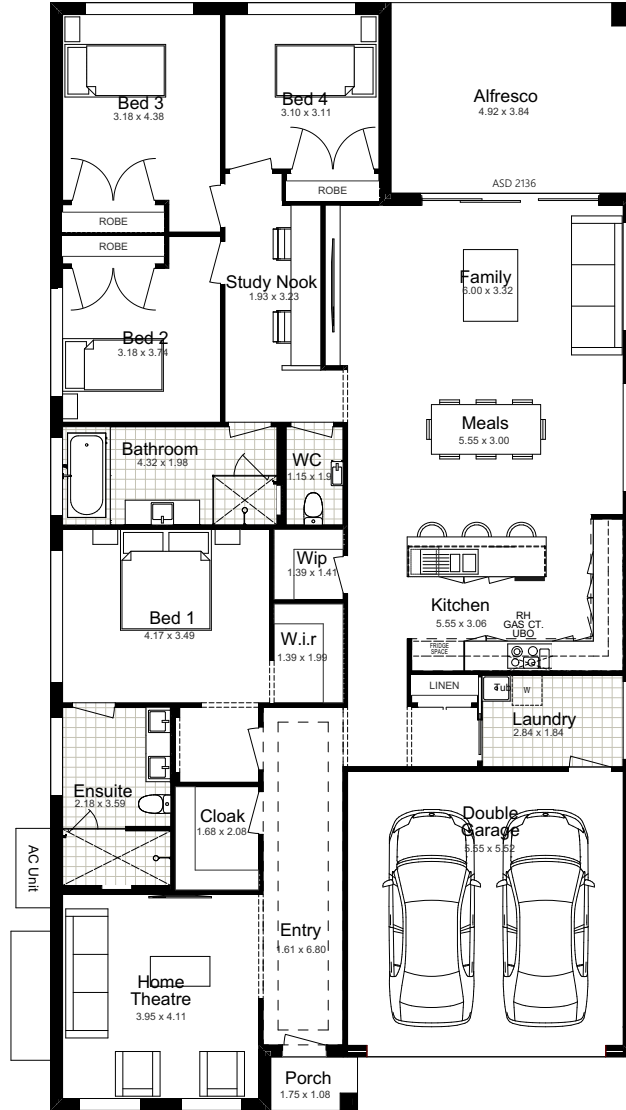
Package Price
\$1,644,250*

Home Design: Macquarie 28

LAND SIZE 581.4m²

Total:	256.55m ²
Width:	11.99m
Depth:	20.15m
Ground Floor:	201.43m ²

Garage:	34.34m ²
Porch:	1.89m ²
Alfresco:	18.89m ²



GROUND FLOOR



4



2



2



2



1

DISCLAIMER: Façade Images shown on our brochures may feature alternative upgrades. Upgraded finishes are not included in the standard range or house design and should be used as a guide only. Plan dimensions, sizes & square meters will vary dependent on the chosen house façade & design. Better Built Homes reserves the right to revise plans, specifications & prices without notice or obligation. All plans are Copyright of Better Built Homes. Licence No. 244242C.