

House & Land Package



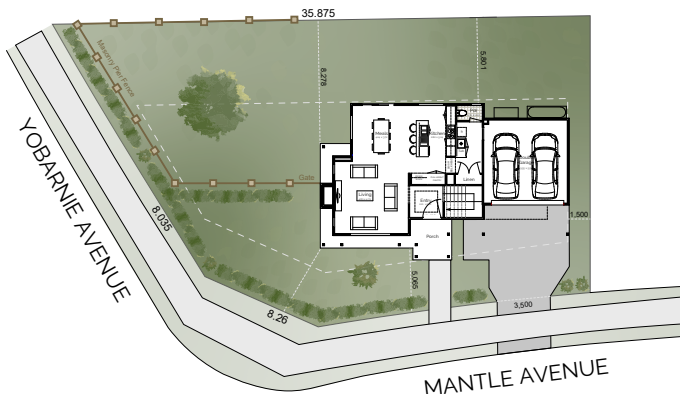
Package Price
\$1,315,440*

Lot 2,
Mantle Street,
North Richmond, NSW 2754

Merrillie Beech
0413 233 752
merrillie@betterbuilthomes.com.au

BETTER LIVING & INSPIRE PROMOTION

- 2450mm high ceilings
- “Everyday Life” brick range
- COLORBOND roofing
- Hume entry door
- 90mm frames
- Caesarstone benchtops
- Caesarstone vanities
- Tiled splashback to kitchen
- Double bowl drop sink to kitchen
- Westinghouse oven
- Westinghouse gas cooktop
- Westinghouse rangehood
- Quality Assurance Program
- 5 star customer service
- Fixed site costs
- 2.0kw solar system
- Ducted air conditioning
- Cold water point
- Driveway included
- Plus much more!



Package Price
\$1,315,440*

Home Design: Clayton 20B
 (Custom Modifications)

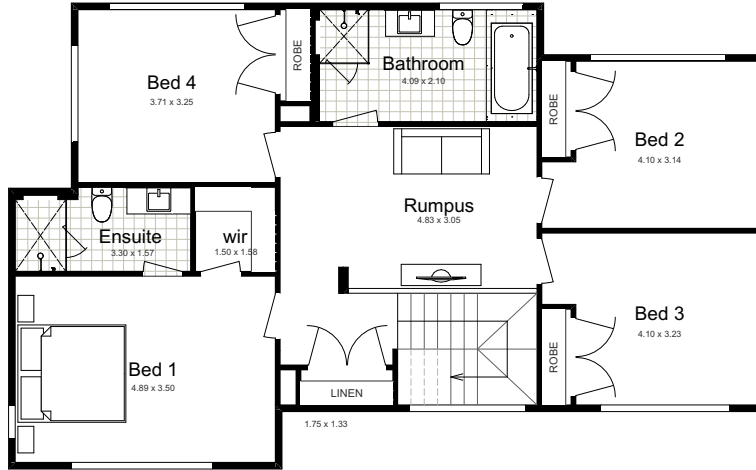
LAND SIZE

579.9m²

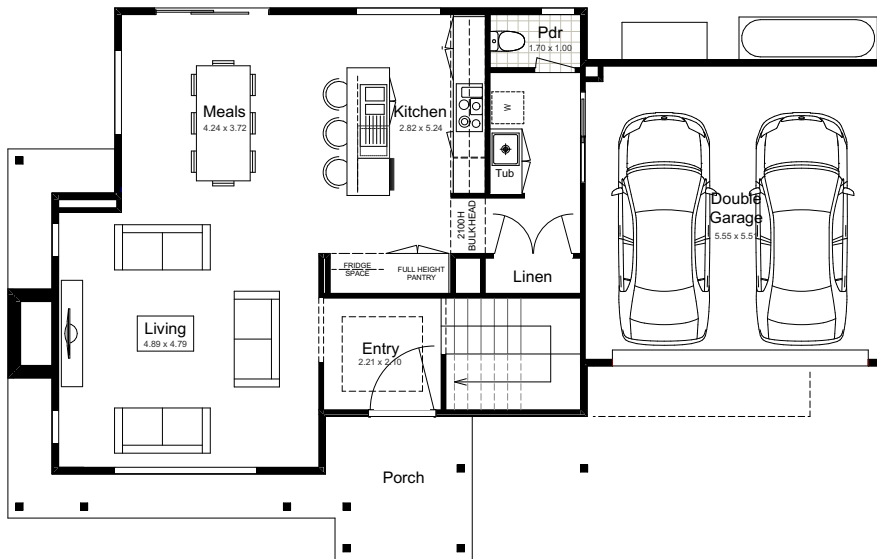
Total:	233.06m ²
Width:	15.93m
Depth:	9.46m
Ground Floor:	109.50m ²

First Floor:	82.45m ²
Garage:	34.65m ²
Porch:	6.46m ²

FIRST FLOOR



GROUND FLOOR



4



2.5



2



3



-

DISCLAIMER: Façade Images shown on our brochures may feature alternative upgrades. Upgraded finishes are not included in the standard range or house design and should be used as a guide only. Plan dimensions, sizes & square meters will vary dependent on the chosen house façade & design. Better Built Homes reserves the right to revise plans, specifications & prices without notice or obligation. All plans are Copyright of Better Built Homes. Licence No. 244242C.