

House & Land Package



Package Price
\$1,081,300*

Lot 118,
9 Kelly Street,
Austral NSW 2179

Liam Fox
0411 308 774
liam.f@betterbuilthomes.com.au

Inclusions

- 2450mm high ceilings
- “Everyday Life” brick range
- COLORBOND roofing
- Hume entry door
- 90mm frames
- Caesarstone benchtops
- Caesarstone vanities
- Tiled splashback to kitchen
- Double bowl drop sink to kitchen
- Westinghouse oven
- Westinghouse gas cooktop
- Westinghouse rangehood
- Quality Assurance Program
- 5 star customer service
- Fixed site costs
- 2.0kw solar system
- Ducted air conditioning
- Cold water point
- Plus much more!

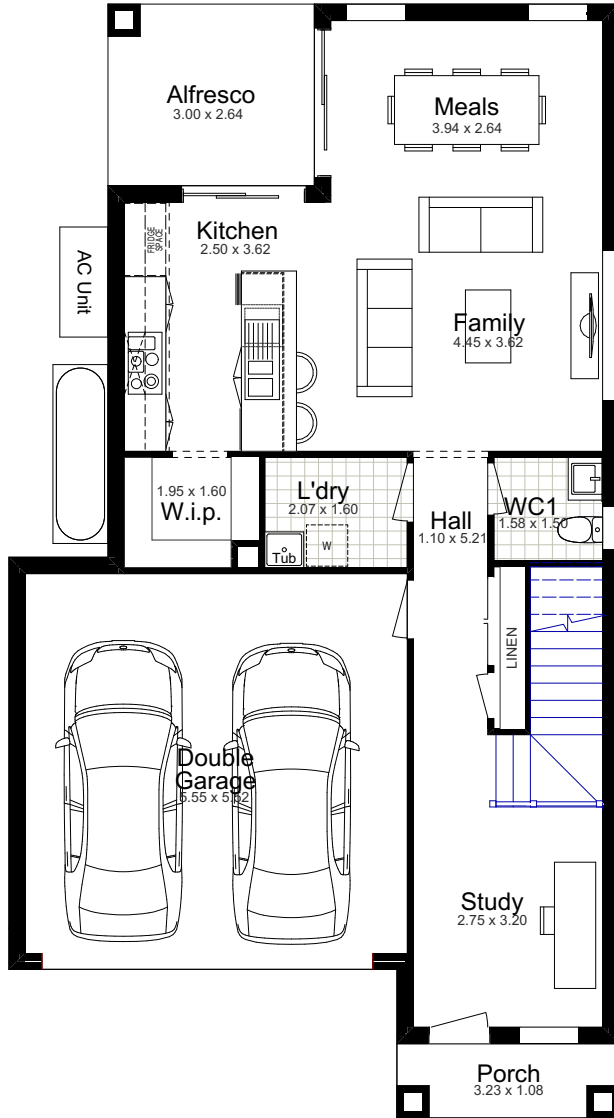
Package Price
\$1,081,300*

Home Design: Bexley 22

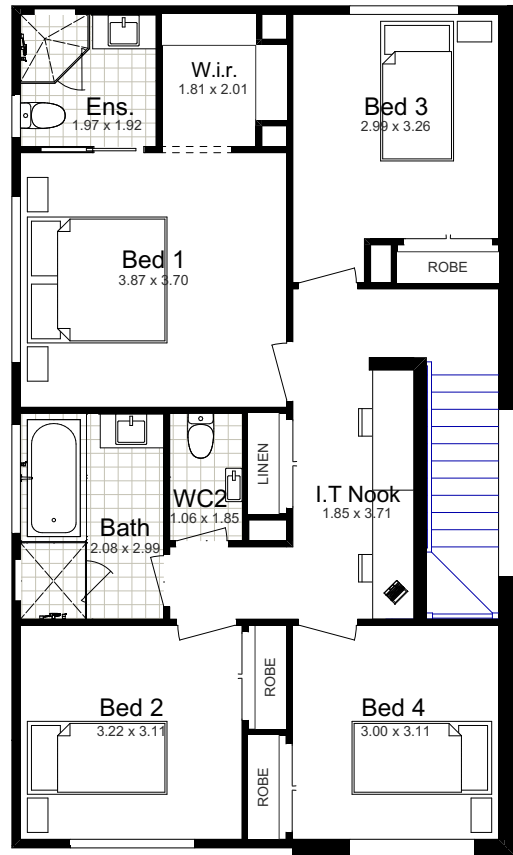
LAND SIZE

326.4m²

Total:	208.83m ²	Garage:	33.66m ²
Width:	8.87m	Porch:	3.49m ²
Depth:	16.19m	Alfresco:	7.92m ²
Ground Floor:	73.85m ²		
First Floor:	89.91m ²		



GROUND FLOOR



FIRST FLOOR



4



2.5



2



2



2

DISCLAIMER: Façade Images shown on our brochures may feature alternative upgrades. Upgraded finishes are not included in the standard range or house design and should be used as a guide only. Plan dimensions, sizes & square meters will vary dependent on the chosen house façade & design. Better Built Homes reserves the right to revise plans, specifications & prices without notice or obligation. All plans are Copyright of Better Built Homes. Licence No. 244242C.