

House & Land Package



Package Price
\$2,425,365*

*T&C's Apply. This render is for illustrative purposes only.
Not all selections are accurate and landscaping is not included.

Lot 12
76 Belmont Grove,
North Richmond, NSW, 2754

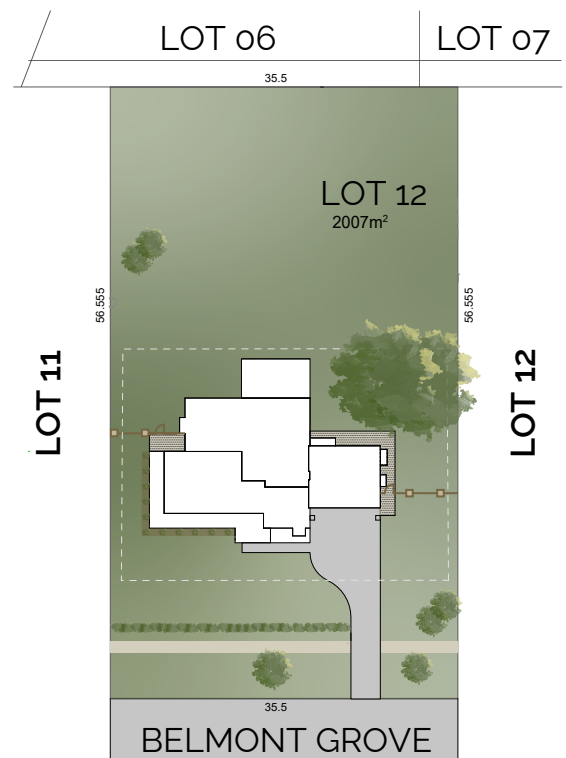
Merrillie Beech
0413 233 752
merrillie@betterbuilthomes.com.au

BETTER LUXURY & OPULENCE PROMOTION

- Caesarstone 40mm benchtop to kitchen, island bench with waterfall edges.
- Polyurethane 500 series 'Shaker' kitchen cabinets.
- Butler's pantry 40mm stone
- Laminate floor finishing.
- Tiling to porch & alfresco.
- Bathroom floor to ceiling tiling

PLUS

- Feature cladding
- Garage door windows
- Butlers kitchen
- Laundry chute
- Driveway included
- PLUS MUCH MORE!



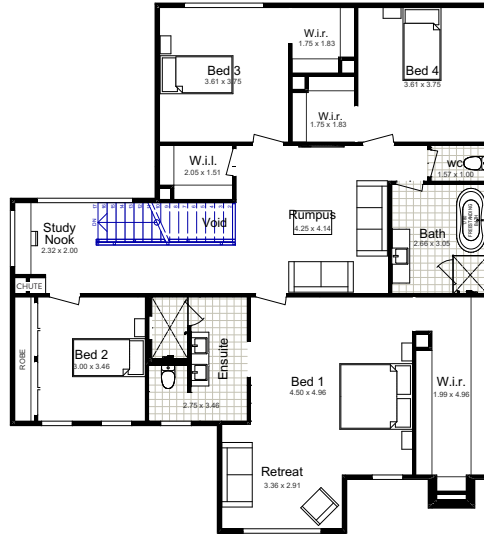
Package Price
\$2,425,365*

Home Design: Emmerson 47

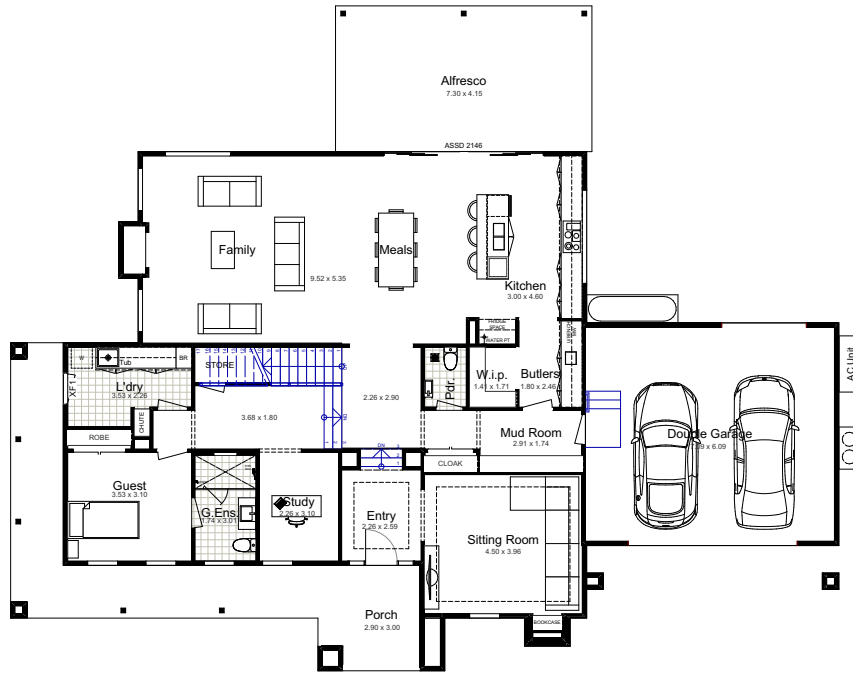
LAND SIZE 2,007m²

Total:	435.28m ²	First Floor:	154.07m ²
Width:	23.58m	Garage:	45.52m ²
Depth:	18.93m	Porch:	32.40m ²
Ground Floor:	172.99m ²	Alfresco:	30.30m ²

FIRST FLOOR



GROUND FLOOR



5



3.5



2



5



2

DISCLAIMER: Façade Images shown on our brochures may feature alternative upgrades. Upgraded finishes are not included in the standard range or house design and should be used as a guide only. Plan dimensions, sizes & square meters will vary dependent on the chosen house façade & design. Better Built Homes reserves the right to revise plans, specifications & prices without notice or obligation. All plans are Copyright of Better Built Homes. Licence No. 244242C.