

**b**  
**better built**  
HOMES



**THE MARIOTE**

# WELCOME TO THE MARIOTE

Introducing the Mariote home design, a coastal dream home where sophistication meets comfort, tailored for those who value both style and space. Boasting 5 generously sized bedrooms and 4 well-appointed bathrooms, this expansive design is perfect for large families or those who cherish the opportunity to host and entertain guests. With a 2-car garage, you'll have ample space for vehicles and storage, while the home's 5 living areas offer unparalleled versatility.

Thoughtfully crafted with multigenerational families in mind, the Mariote home design includes a guest suite that provides a private and comfortable retreat for in-laws, extended family, or visitors. The heart of the home features a large, open-plan lounge room that can easily transform into a cosy media room—perfect for movie nights with the family. For the younger members of the household, the upstairs lounge is an ideal space to relax and unwind after a day of adventure or school.

Beyond its functional layout, this home embraces a lifestyle of ease and elegance. The spacious study offers the perfect environment for working from home or managing daily tasks, while the multiple living spaces allow everyone in the family to find their own corner of comfort. Whether it's hosting family gatherings, enjoying cosy nights in, or creating lasting memories with loved ones, the Mariote home design is crafted to be the backdrop for a lifetime of cherished moments.



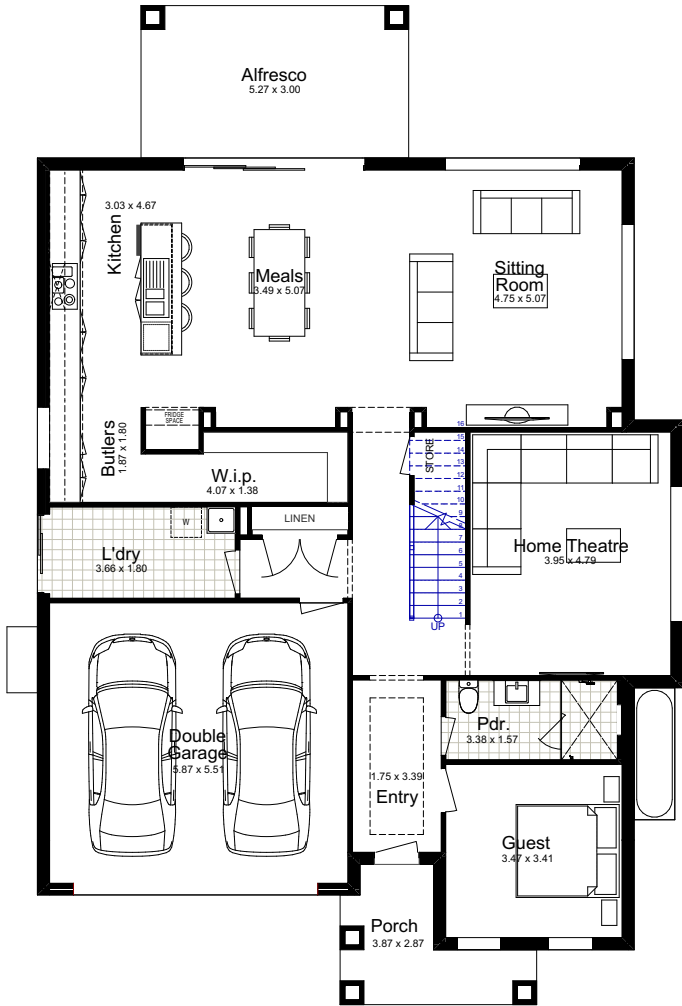
# MARIOTE 41

Boasting 5 generously sized bedrooms and 4 well-appointed bathrooms, this expansive design is perfect for large families or those who cherish the opportunity to host and entertain guests. With a 2-car garage, you'll have ample space for vehicles and storage, while the home's 5 living areas offer unparalleled versatility.

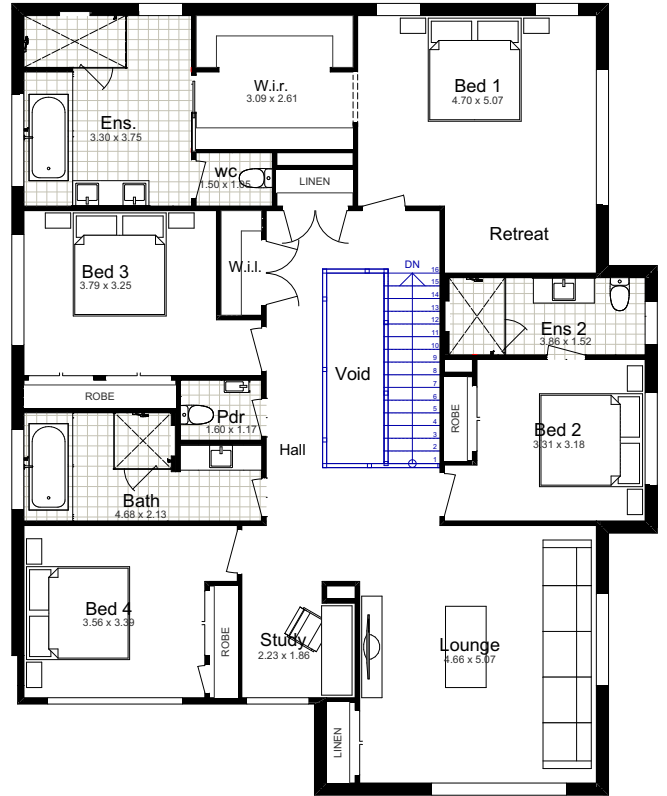


## SUITS 15m LOTS

TOTAL:	378.68m <sup>2</sup>	FIRST FLOOR:	177.45m <sup>2</sup>
WIDTH:	12.71m	GARAGE:	35.75m <sup>2</sup>
DEPTH:	19.67m	PORCH:	7.04m <sup>2</sup>
GROUND FLOOR:	142.63m <sup>2</sup>	ALFRESCO	15.81m <sup>2</sup>



GROUND FLOOR



FIRST FLOOR



# FACADE OPTIONS

COASTAL



TRADITIONAL



CLASSIC



Façade Images shown on our brochures may feature alternative upgrades. Upgraded finishes are not included in the standard range or house design and should be used as a guide only. Plan dimensions, sizes & square metres will vary dependent on the chosen house façade & design. Better Built Homes reserves the right to revise plans, specifications & prices without notice or obligation. All plans are a Copyright of Better Built Homes. Please consult your sales consultant for a full list of standard inclusions & façade options.

# FACADE OPTIONS



INTERIOR OF MARIOTE 45



INTERIOR OF MARIOTE 45



COASTAL B-LINE

Façade Images shown on our brochures may feature alternative upgrades. Upgraded finishes are not included in the standard range or house design and should be used as a guide only. Plan dimensions, sizes & square metres will vary dependent on the chosen house façade & design. Better Built Homes reserves the right to revise plans, specifications & prices without notice or obligation. All plans are a Copyright of Better Built Homes. Please consult your sales consultant for a full list of standard inclusions & façade options.

07.02.2025

# better built HOMES

1300 100 922

Unit 3, 13 Renshaw Street, Cranebrook NSW 2749  
info@betterbuilthomes.com.au

[betterbuilthomes.com.au](http://betterbuilthomes.com.au)

## Leppington Living Sales Centre

23 Moon Street,  
Leppington NSW 2179

## Redbank Display Village

19 Yobarnie Avenue,  
North Richmond NSW 2754

