



THE NORTHWOOD

DISPLAY HOME LOCATED AT
37 SUBZERO CRESCENT, MENANGLE PARK NSW 2563



WELCOME TO

THE NORTHWOOD

The Northwood is a thoughtfully designed double-storey home created for modern family living. Featuring 5 spacious bedrooms, 3 bathrooms, and 5 versatile living areas, this home has room for everyone to enjoy their own space while staying connected.

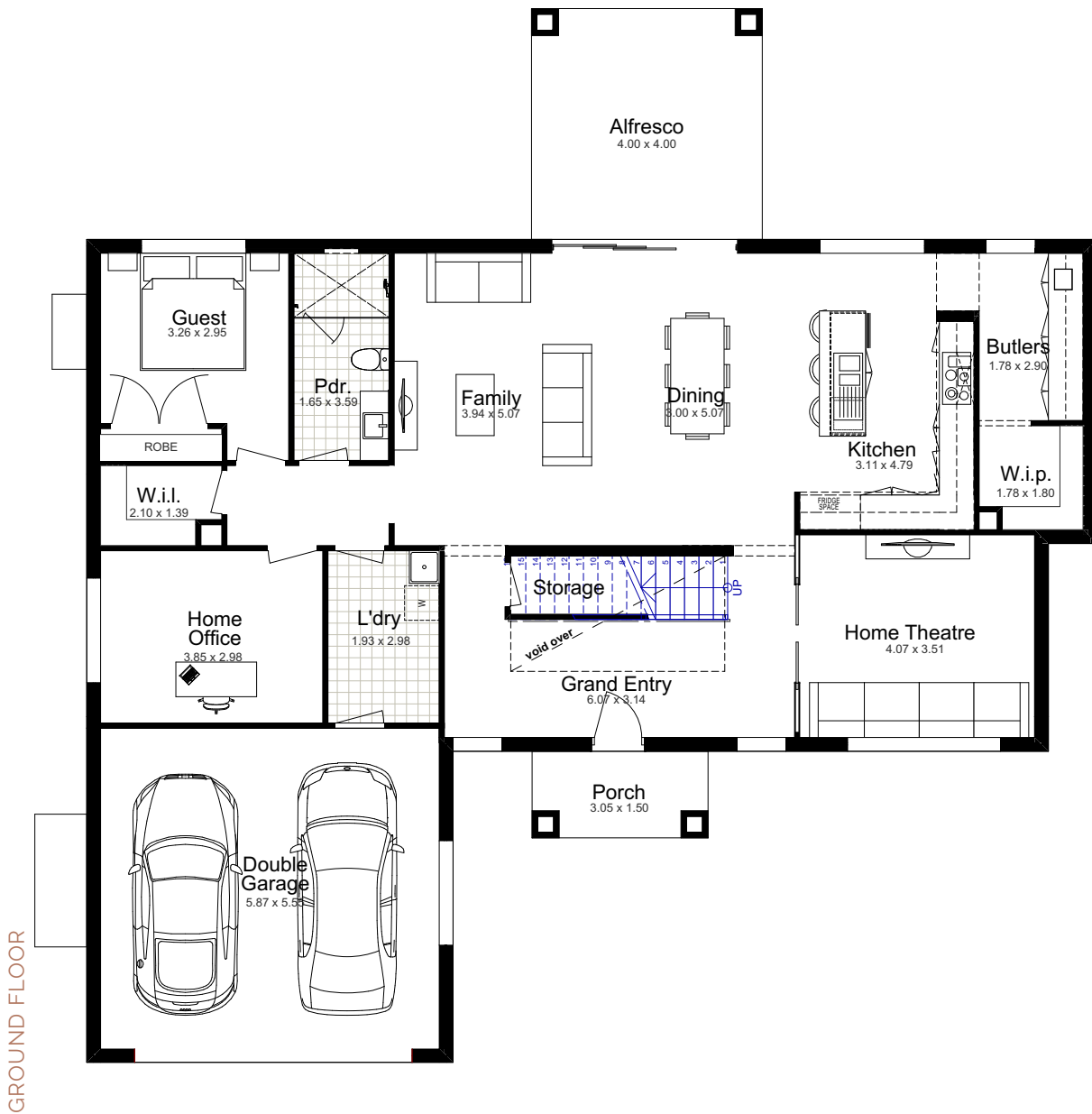
A stunning double-height void opens over the main living area, filling the heart of the home with natural light and a sense of grandeur.

Each bedroom includes its own study nook, making it the perfect choice for growing families who need both comfort and functionality.

With seamless flow between living zones, a balance of private retreats and shared spaces, and a layout that's as practical as it is stylish, the Northwood is a home designed to evolve with your family.

THE NORTHWOOD 42

SUITS 20M LOTS

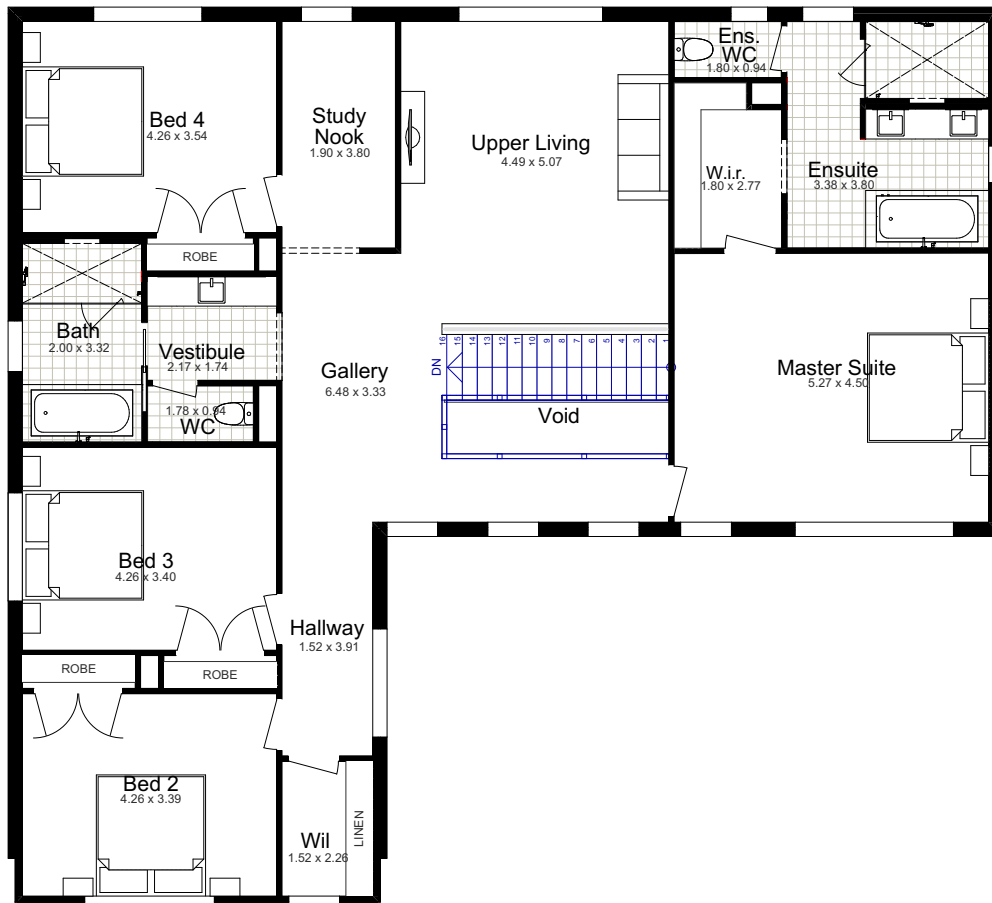


A smartly designed double-storey home with 5 bedrooms, 3 bathrooms and multiple living spaces. The Northwood 42 offers the perfect balance of practicality and comfort, with study nooks for growing families and a light-filled void over the main living area.

THE NORTHWOOD 42

SUITS 20M LOTS

FIRST FLOOR



TOTAL:	393.25m ²	First Floor:	186.15m ²
Width:	17.51m	Garage:	36.67m ²
Depth:	18.26m	Porch:	4.58m ²
Ground Floor:	149.85m ²	Alfresco:	16.00m ²

THE NORTHWOOD 45

SUITS 20M LOTS

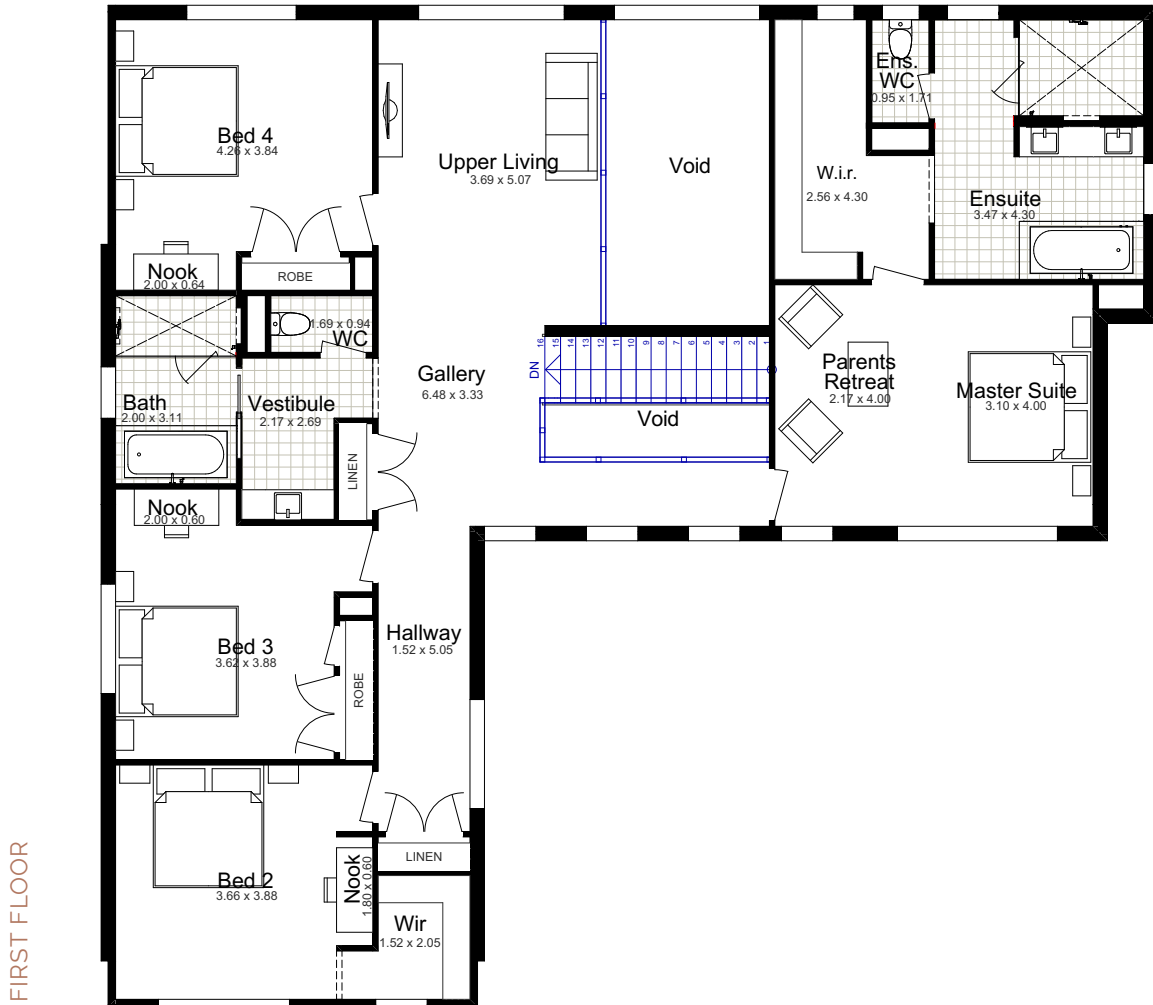
GROUND FLOOR



The Northwood 45 is designed with balance in mind — a home where 5 living zones, 5 bedrooms and a soaring double-height void come together in harmony. Its clever layout allows for easy flow between spaces, making it perfect for everyday family life as well as entertaining.

THE NORTHWOOD 45

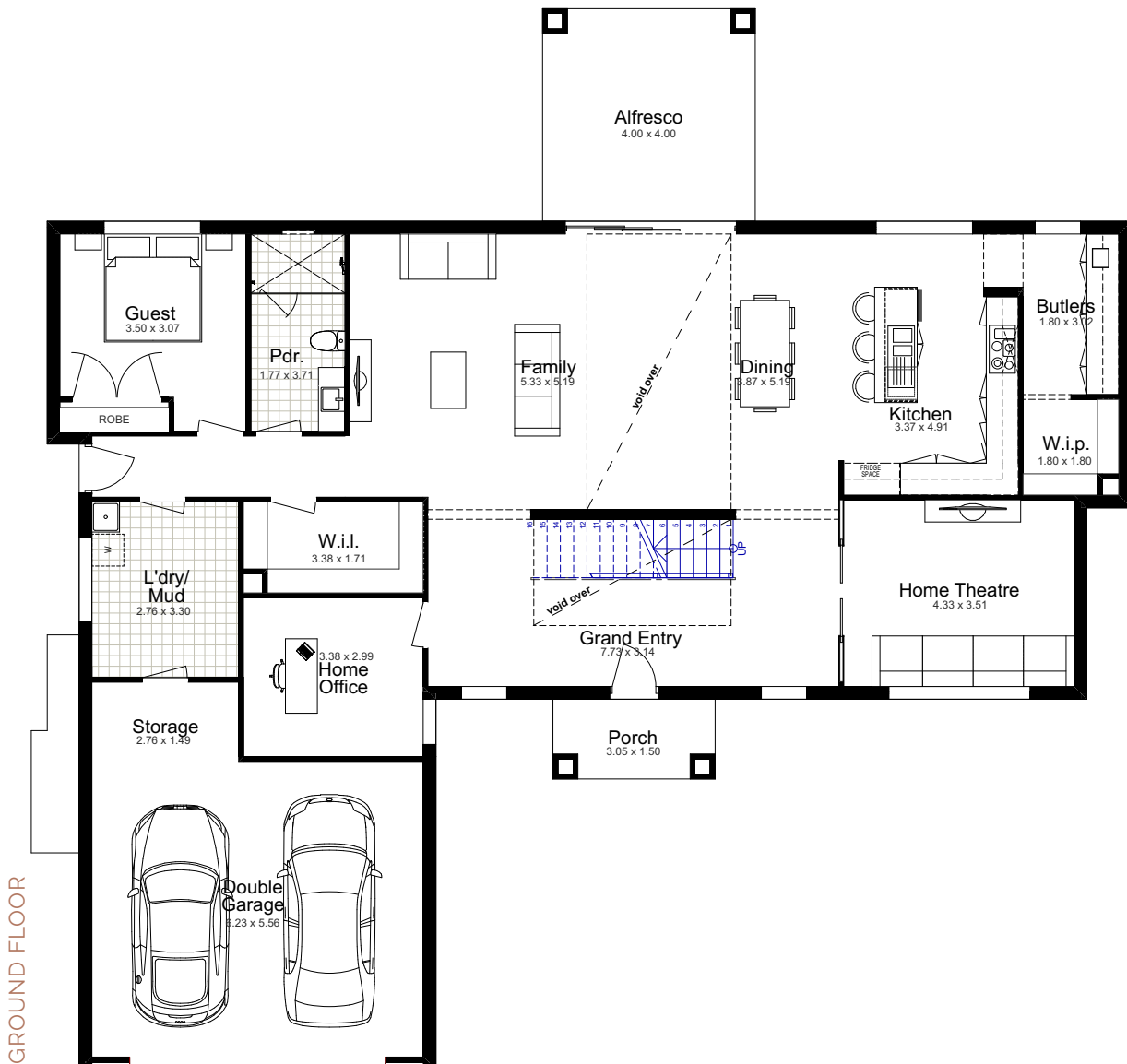
SUITS 20M LOTS



TOTAL:	420.19m ²	First Floor:	200.68m ²
Width:	18.11m	Garage:	41.94m ²
Depth:	19.83m	Porch:	4.58m ²
Ground Floor:	156.99m ²	Alfresco:	16.00m ²

THE NORTHWOOD 51

SUITS ACREAGE LOTS

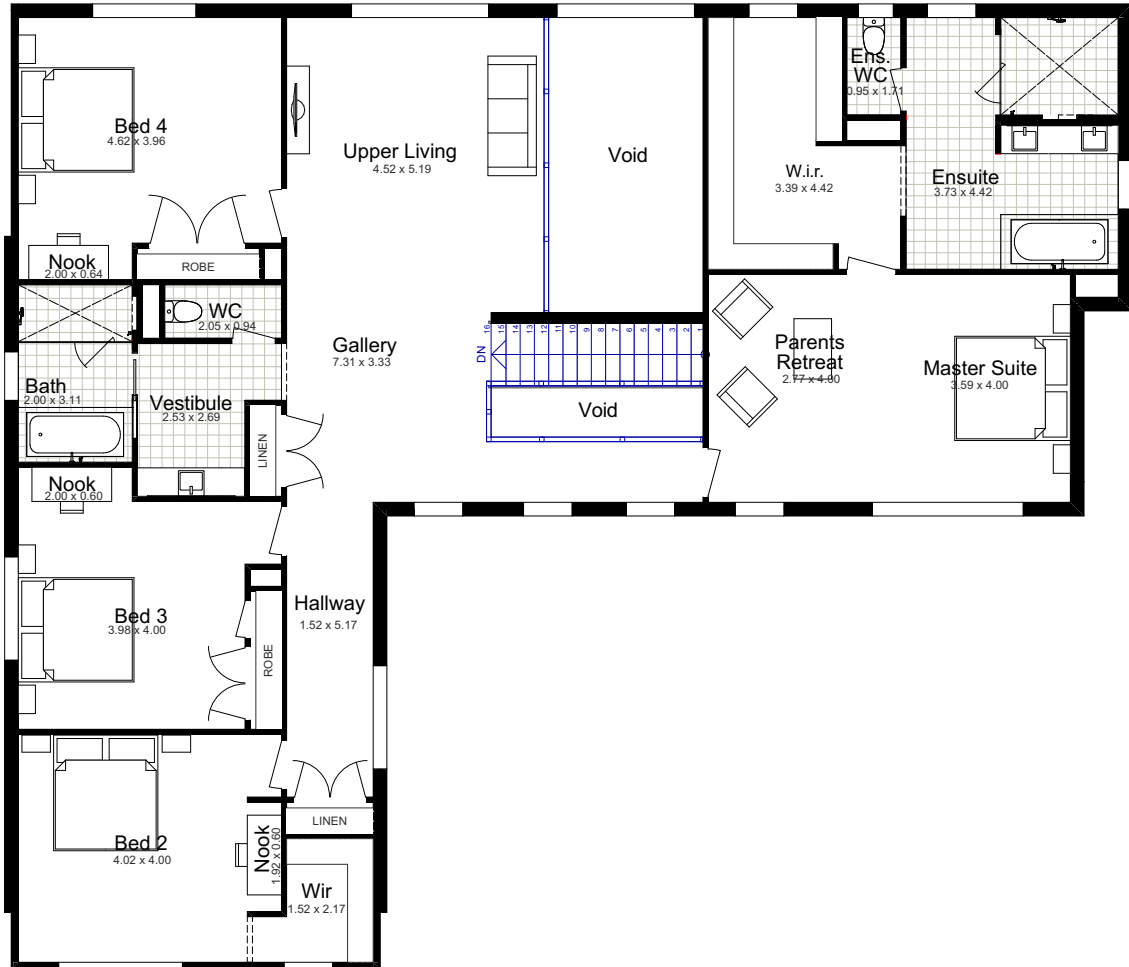


Generous in scale, the Northwood 51 offers a lifestyle of both connection and retreat. Featuring grand living areas, 5 bedrooms, 3 bathrooms and a stunning void overlooking the main living space, this design is ideal for growing families who love open, light-filled spaces.

THE NORTHWOOD 51

SUITS ACREAGE LOTS

FIRST FLOOR

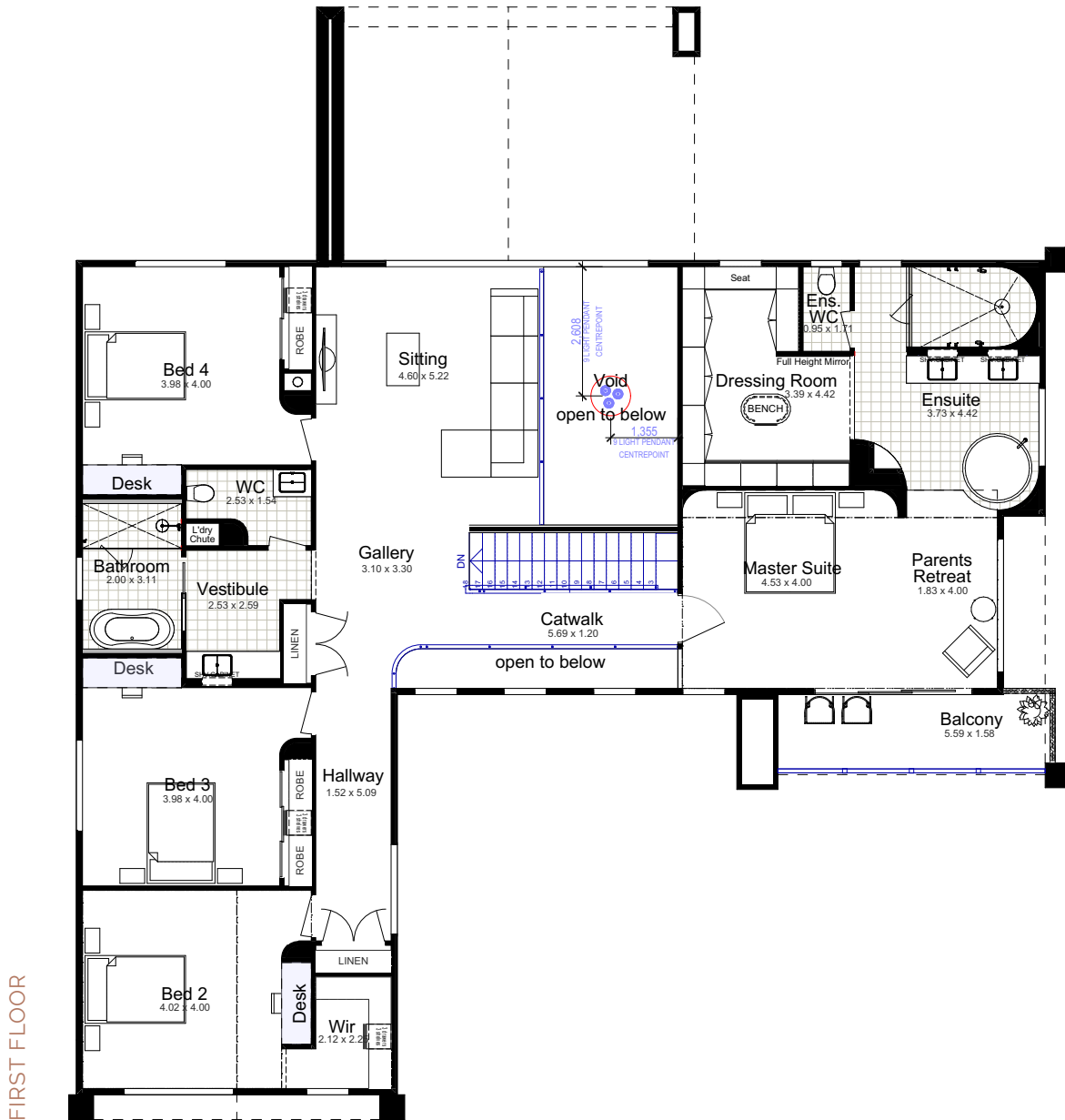


TOTAL:	472.28m ²	First Floor:	227.60m ²
Width:	20.39m	Garage:	44.06m ²
Depth:	19.95m	Porch:	4.58m ²
Ground Floor:	180.04m ²	Alfresco:	16.00m ²

THE NORTHWOOD 54

SUITS ACREAGE LOTS

ON DISPLAY



FIRST FLOOR



5



3.5



2



5



1

TOTAL:	501.00m ²	Garage:	38.09m ²
Width:	20.77m	Porch:	10.28m ²
Depth:	22.45m	Alfresco:	38.72m ²
Ground Floor:	183.85 m ²	Patio:	0.86m ²
First Floor:	220.65m	Balcony Front:	8.55m ²

FACADE OPTIONS

ASHEN DELUXE



Facade Images shown on our brochures may feature alternative upgrades. Upgraded finishes are not included in the standard range or house design and should be used as a guide only. Plan dimensions, sizes & square metres will vary dependent on the chosen house facade & design. Better Built Homes reserves the right to revise plans, specifications & prices without notice or obligation. All plans are a Copyright of Better Built Homes. Please consult your sales consultant for a full list of standard inclusions & facade options.

FACADE OPTIONS

ASHEN DELUXE WITH
WRAP AROUND BALCONY



Facade Images shown on our brochures may feature alternative upgrades. Upgraded finishes are not included in the standard range or house design and should be used as a guide only. Plan dimensions, sizes & square metres will vary dependent on the chosen house facade & design. Better Built Homes reserves the right to revise plans, specifications & prices without notice or obligation. All plans are a Copyright of Better Built Homes. Please consult your sales consultant for a full list of standard inclusions & facade options. Issue 17.09.2025.



OUR HOMES ARE BETTER



1300 100 922

Unit 3, 13 Renshaw Street, Cranebrook NSW 2749
info@betterbuilthomes.com.au

betterbuilthomes.com.au

To view our display home locations,
please scan the QR code.

